



INSTALLATION INSTRUCTIONS FOR A REPLACEMENT TANK

THE LONG RANGER

THE BIG TANK FOR A BIG COUNTRY



F250 4WD SuperCab

(DIESEL Australian Spec Models 2001 to 2006)

TR57S – Replacement 295 Litre Main Tank

GENERAL NOTES

- 1) Take a few minutes to read through this installation guide before proceeding.
- 2) Fitting time is approximately five hours. No major vehicle modifications are required. This LONG RANGER tank locates under the vehicle in place of the original tank.
- 3) The original filler and other fittings are used in this installation. Extreme care and cleanliness is recommended when handling fuel level sender and submerged fuel pump units. Inspect any components that are to be reused from the original tank installation for serviceability and replace any item found to be defective.
- 4) LONG RANGER tanks are coated with a high-performance primer. For added protection, a top coat may be added. If the vehicle has been rustproofed, it is suggested that the tank (and any changes made to the vehicle during fitting) be touched up after installation.
- 5) Although the LONG RANGER tank maximises ground clearance, it should be noted that the new tank will sit approximately the same height as the original tank (35mm higher than the bash plate at front and 20mm lower than the centre of the axle housing at the rear).
- 6) Check if the vehicle owner wants to retain the original tank and any associated parts.
- 7) **Observe safety precautions during the installation of the LONG RANGER fuel tank.**
- 8) A vehicle hoist is not essential but will speed the job up significantly. Note: a two post hoist can not be used see picture below, and the vehicle will not fit on some short 4 posters).
- 9) Check that tools, clothing and footwear are clean before working on the interior of the vehicle.



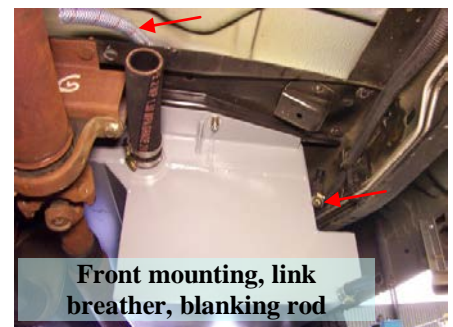
INSTALLATION KIT – TR57S

QTY DESCRIPTION This installation kit has been checked by _____

- 1 LONG RANGER TANK (**TR57S**)
- 1 LONG RANGER TANK (**TR57SA**)
- 1 Mounting plate (**B85**) for tr57s
- 1 Mounting crossmember for tr57a
- 2 End plates (**B86**) for tr57a crossmember
- 1 Cover plate (**B91**) for fuel line protection
- 1 Captive nuts with wire (**SF09**)main tank
- 1 Captive nuts with wire (**SF10**)front tank, “T” shape
- 2 Captive M10 x 25mm bolt with tag (**SF11**) main tank
- 1 Clamp ring (**tr57**)
- 1 Blanking plug 6.5mm
- 2 Brass straight 1/4 x 1/2-inch BSP
- 2 Bolts M6 x 20mm long
- 2 Bolts M6 x 25mm long
- 4 Self-locking nuts M6
- 8 Flat washers M6 mudguard
- 8 Bolts M8 x 25mm long (crossmember to chassis)
- 8 Self-locking nuts M8
- 16 Flat washers M8
- 3 Bolts M10 x 25mm long (tank to chassis)
- 3 Bolts M10 x 30mm long (tank to chassis on pass. side)
- 2 Bolts M10 x 50mm long (front tank to crossmember)
- 7 Self-locking nuts M10
- 14 Flat washers M10 x 30 x 2.5mm
- 3 Spring washer M10
- 8 Screws M5 x 10 mm for sender
- 1 Spring clamp 6.5mm
- 2 Hose clamps (**MH4**)
- 6 Hose clamps (**MH6**)
- 2 Hose clamps (**HS28**)
- 1 Fuel hose 12.5mm x 110mm (tank to tank drain)
- 1 Nylex Hose 16mm x 1700mm (link breather)
- 1 Fuel hose, 38mm ID x 200mm long (tank to tank filler joiner)
- 5 200mm cable ties
- 1 Installation instructions
- 1 Warranty information sheet and registration card
- 1 LONG RANGER sticker

INSTALLATION GUIDE

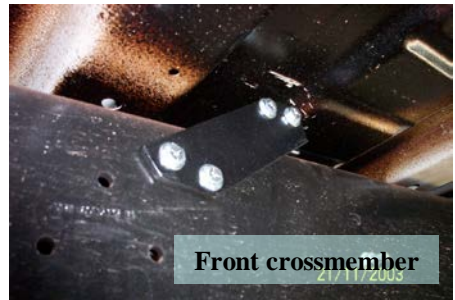
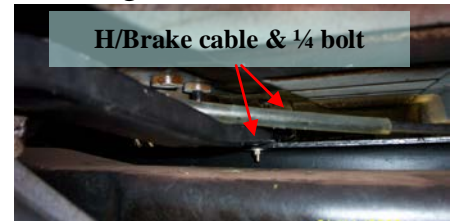
1. Check that all items listed in the LONG RANGER kit have been received, and that nothing has been damaged in transit.
2. Although the LONG RANGER tank has been cleaned and sealed at the factory, it is recommended that its interior be vacuumed again as an added precaution against blocked filters and/or fuel pump damage.
3. If parts are missing or damaged, if foreign matter is found in the tank, or if any problems arise during installation, contact the factory office without delay for advice phone (02) 4953 3288, fax (02) 4953 1916 or visit www.thelongranger.com.au
4. Inspect any components to be reused from the original tank for serviceability and replace if found to be defective, eg. EFI pump strainers, fuel hoses, gaskets etc.
5. Drain fuel from tank into a suitable container. There may not be a drain plug – in this case use a pump or syphon. **NOTE: Observe recognised safety practices when handling fuel.**
6. Remove guard from tank.
7. Disconnect filler and breather from tank.
8. Support tank and lower enough to disconnect hoses and wiring.
9. Remove tank, straps and captive clips from chassis.
10. Refer to photo: Transfer the pickup/sender to the LONG RANGER tank, the locating tabs will need to be bent in to fit new tank.
IMPORTANT: Check that sender float arm does not foul on inside of tank.
11. Using original O-ring, fit the pickup / sender unit to the LONG RANGER tank with screws and clamp ring supplied.
12. The breather line which was disconnected from the front of the original tank needs to be blocked off with the 6.5mm blanking pug and spring clip supplied. Cable tie in place.
13. Drill hole out to M10 clearance on back side of front crossmember. (this will be for the front mounting of the main tank and is located on the same crossmember as the centre bearing)
14. Lift the LONG RANGER tank into position, support with a suitable jack or stand.
15. Fit the link breather to the 16mm fitting in the rear section of the tank and run along chassis towards front left hand corner of tank. Ensure this will not end up squashed when tank is bolted in place.
16. Connect to rollover valve to existing 6.5mm breather hose.
17. Re-connect wiring, pickup and return hoses to tank.



18. Lift tank into final position, fit a M10x25 bolt with tag, washers and nyloc nut in front bracket and two M10 x 30 inch bolts, washers and spring washers with SF09, (pass over top of chassis). Fasten all bolts
19. Drill Remainder holes, one in front and two on the right hand side. Using mounting plate (B85) on top of chassis for right hand side, fit a M10x25 bolt with tag to front, fit all nuts, washers and fasten.

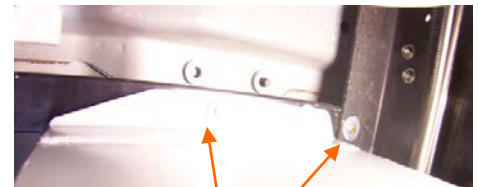
Installing 2nd tank

20. Fit front crossmember, this is best put in place whilst upside down then turning over so the bulge goes over the output shaft. The handbrake cable is better if passed over the top of crossmember. Fit end plates to crossmember and chassis using 5/16 bolts supplied. Drill up through top lip in chassis at either end of crossmember and fit M6 x 50 bolts, washers and nuts, fasten bolts.
21. Fit the two brass barbs to the threaded fittings on the end of both the tanks using a suitable sealant.



22. Fit the 12.5mm x 110mm fuel hose with clamp to the barb on the main tank.
23. Fit 38mm hose joiner to main tank using hose HS28 clamp supplied.

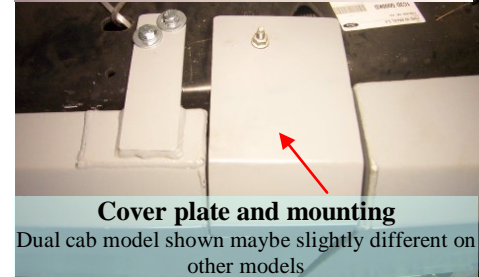
24. While lifting tank into position align hoses with respective fittings. Fit a M10x25 at the rear RH side, one M10x30 with SF10 and spring washer to LH side rear and M10 x 50 bolts washers and nylocs through the front crossmember.



25. Connect link breather to top of 2nd tank, trim if required
26. Fit cover plate over fuel transfer hose, fit behind tank mount and drill two 6mm in holes though both. Fit bolts and fasten.



27. Check that all bolts and hose clamps are tensioned correctly. Check for clearance all round.
28. Fit filler and fast fill breather to main tank trim as required.
29. Cable tie link breather up along chassis no drooping sections.



30. Transfer fuel removed from original tank into the LONG RANGER.
31. We suggest that the tank is filled with a test load of fuel (not included in the quoted price).
32. Run engine and check for leaks and air locks.
33. Visually check the job over and detail the area involved in the work before returning the vehicle to its owner.

Explain to the owner the operation of the LONG RANGER TANK.

- a) The LONG RANGER tank will fill in a similar fashion to the tank it replaces, but the operator has the option of carrying a substantially larger quantity of fuel.
- b) Due to the different shape of the LONG RANGER tank the gauge will measure a larger quantity of fuel and will remain on *FULL* for a longer distance before slowly moving to *EMPTY*. The low warning light (some models) when activated will also measure a proportionally larger quantity of fuel. It is suggested that the gauge readings be cautiously interpreted until familiar with the new readings.
- c) The quoted capacity of the LONG RANGER tank was determined by a bench test. The actual operating capacity may vary slightly from vehicle to vehicle.
- d) The vehicle manufacturer selected springs without accounting for a bigger fuel tank. If required suspension modification options are available – please ask for advice.
- e) The LONG RANGER tank is a premium quality accessory that will provide many years of satisfactory service provided that the **Care and Maintenance** items listed below are taken care of each time the vehicle is serviced.

Hand these instructions, together with the Warranty Registration card and warranty information, to the owner. Neatly apply the LONG RANGER sticker to the rear bumper or window.

CARE AND MAINTENANCE

- 1. After the first **1,000 kilometres**, clean or replace the vehicle's fuel filter and check all hose connections for leaks. Check that all fasteners are correctly tensioned, and that there is no rubbing or chafing of the tank, fuel hoses or associated components.
- 2. At each of the vehicle manufacturer's recommended services, check all fastenings for the correct tension, that rust preventative has been correctly applied where applicable, release the tank drain plug and confirm that there is no water present, and replace the fuel filter according to manufacturer's recommendations.

Blank page.