

KINGSLEY

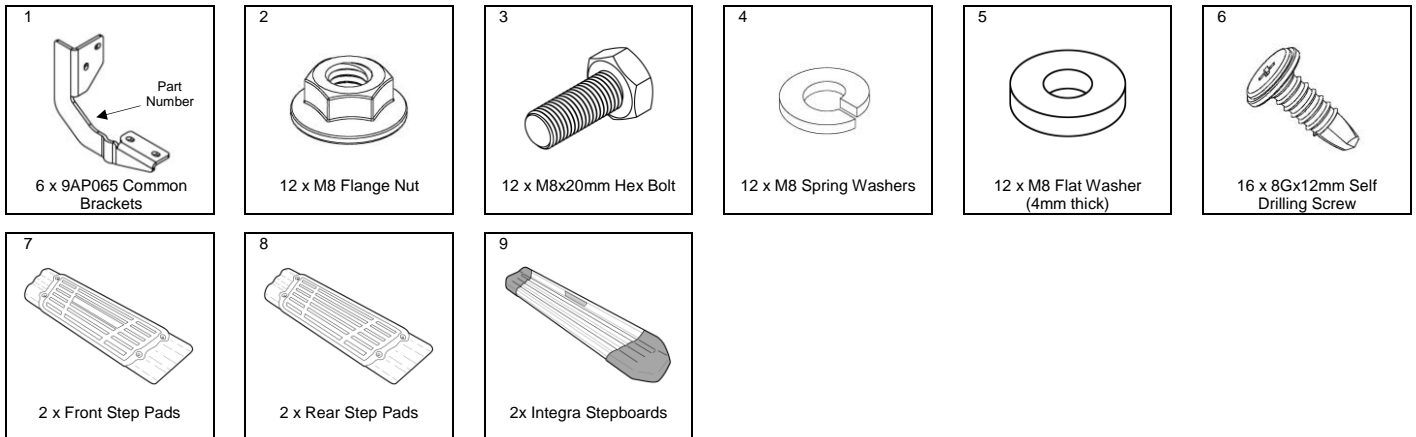
INTEGRA STEP®

FITTING INSTRUCTIONS

Part No: 30N73D
NISSAN NAVARA D23 NP300 DUAL CAB
Commencing 2015



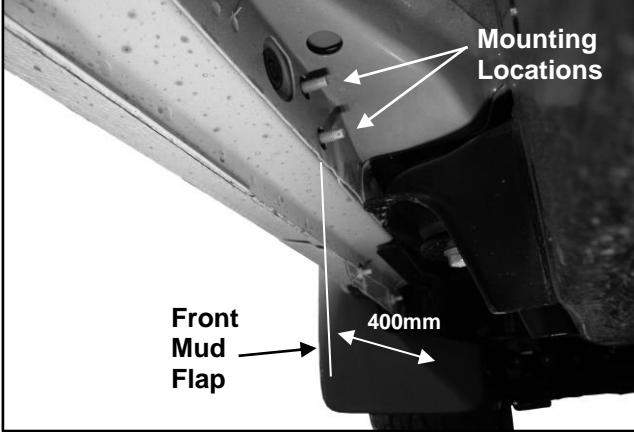
Kit Contents (Approximate Fitting Time: 60 minutes)



TOOLS REQUIRED: • Tape Measure • 12mm & 13mm Sockets / Spanners • Torque Wrench
• Drill • Phillips Head Screwdriver Bit

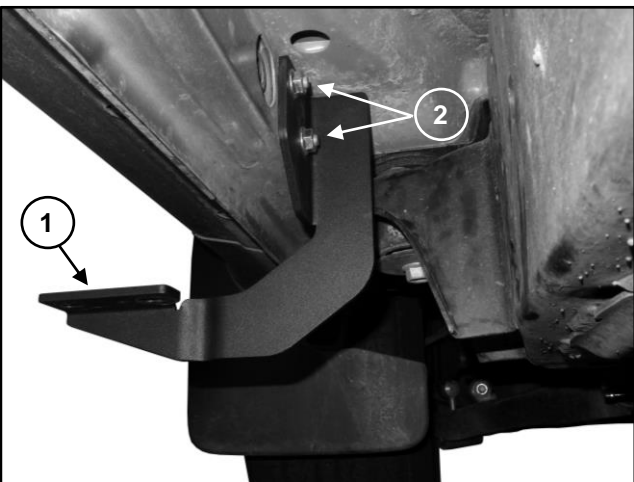
BEFORE INSTALLATION: Please read these instructions carefully before installation, paying special attention to all 'Notes'. Failure to do so may result in damage of parts and/or injury to the installer or customer. Place side steps in a safe place until required. Check the contents of this kit before commencing fitment & report any discrepancies.

Passenger's Side



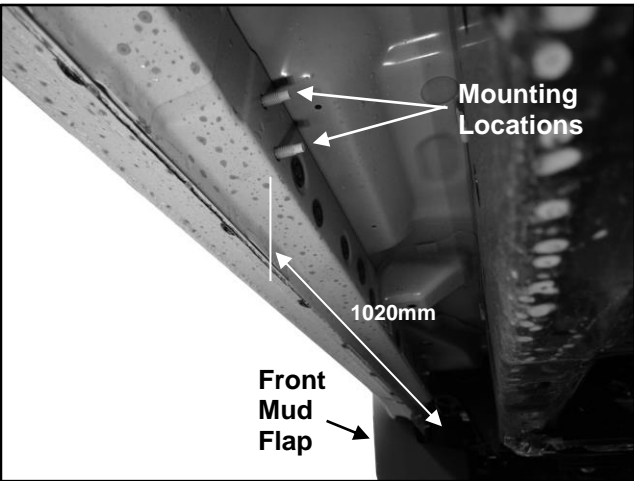
Step 1. Move to the L/H (Passenger's) side of the vehicle.

Locate the 2 x M8 studs at the front bracket mounting position, approximately 400mm from the front mud flap.



**Step 2. Attach a Common Bracket [Item 1] to the front mounting position using:
2 x M8 Flange Nuts [Item 2]**

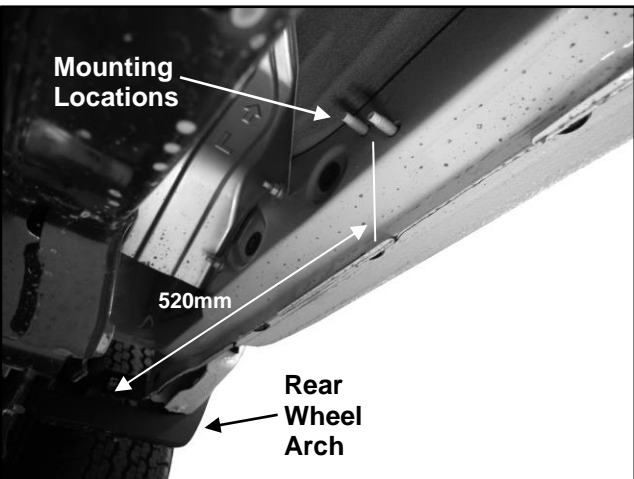
Ensure the bracket is level and square, then finger tighten only.



Step 3. Move to the centre of the cab.

Locate the 2 x M8 studs at the centre bracket mounting position, approximately 1020mm from the front mud flap.

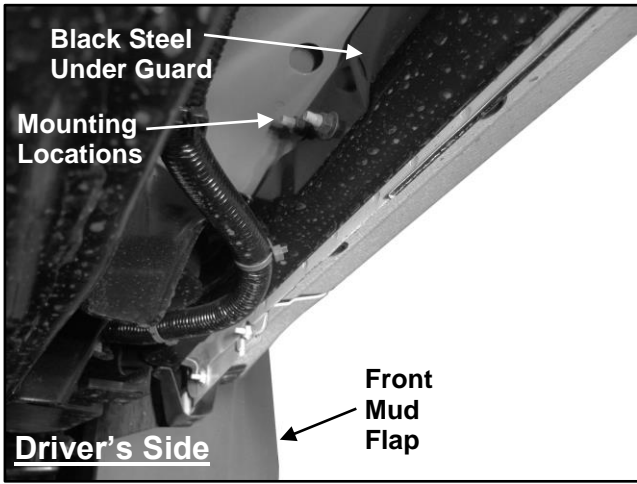
Repeat **Step 2** to attach a Common Bracket [Item 1] to this mounting location.



Step 4. Move to the rear of the cab.

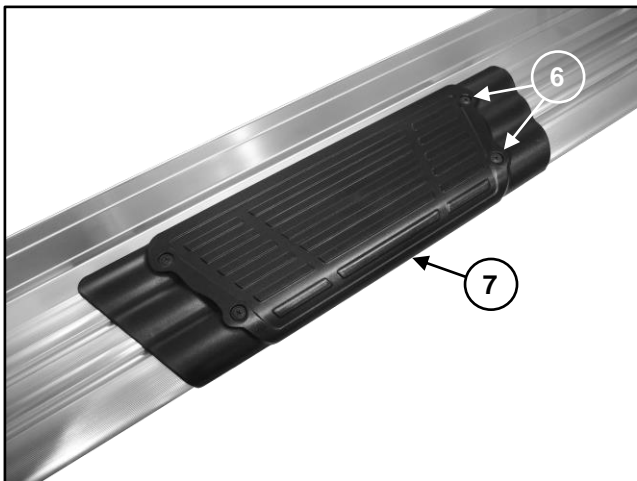
Locate the 2 x M8 studs at the rear bracket mounting position, approximately 520mm from the rear mud flap.

Repeat **Step 2** to attach a Common Bracket [Item 1] to this mounting location.



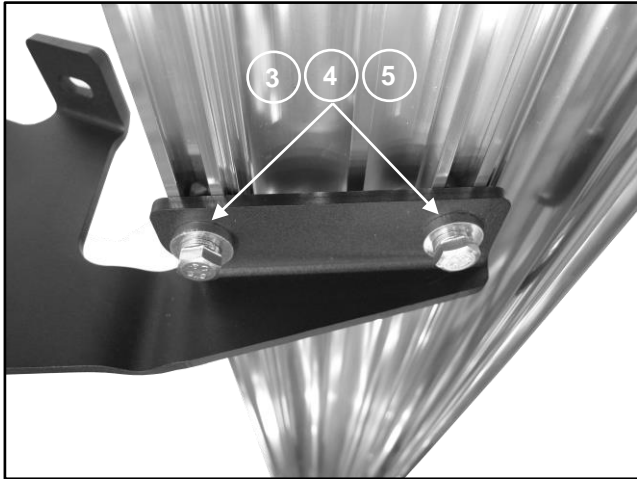
Step 5. Repeat Steps 1 – 4 to fit the remaining brackets to the R/H (Driver's) side of the vehicle.

Note: Remove and discard the 2 x M8 nuts at the front and centre mounting locations and leave the steel under guard in place.



Step 6. Optional

Step pads [Item 7 & 8] can be installed onto Stepboards [Item 9]. As a guide, fit step pads under door centres using 4 x Self Drilling Screws [Item 6] per step pad.



Step 7. Install Stepboards to both sides of vehicle using the following quantity of fasteners for each bracket:

- 2 x M8 Hex Bolts [Item 3]
- 2 x M8 Spring Washers [Item 4]
- 2 x M8 Flat Washers [Item 5]

Position Stepboards 5-10 mm behind front mud flaps.

Tighten all M8 fasteners to 13 Nm.

- Place “KINGSLEY SIDE STEP Warranty” on customer’s front seat
- Clean the Side Steps if necessary using PH - Neutral soapy water ONLY

Your Side Steps are now ready for use