

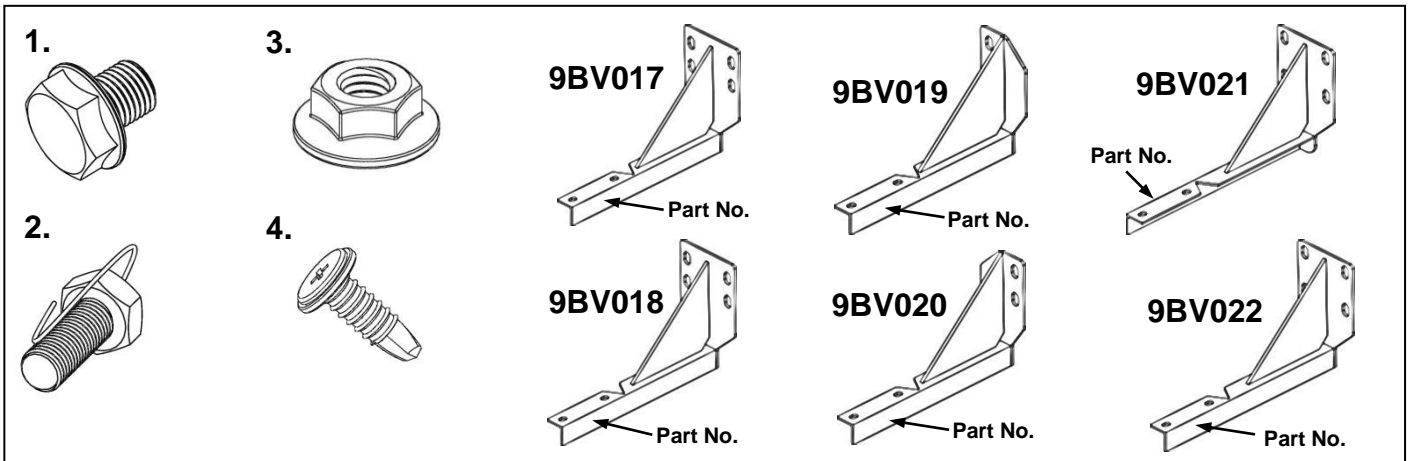
FITTING INSTRUCTIONS: SIDE STEPS

Part No: 30V20D
VW AMAROK DUAL CAB
Model Commencing 03/2011



ENDCAPS: Front – 1 pair Standard **endcaps**
 Rear – 1 pair Standard **endcaps**

STEPPADS: Front - 1 pair with 'INTEGRA' label
 Rear - 1 pair PLAIN



HARDWARE KIT CONTENTS		
ITEM NO.	DESCRIPTION	QTY
1	M8 Flange Bolt	12
2	M10 Wired Bolt	12
-	-	-

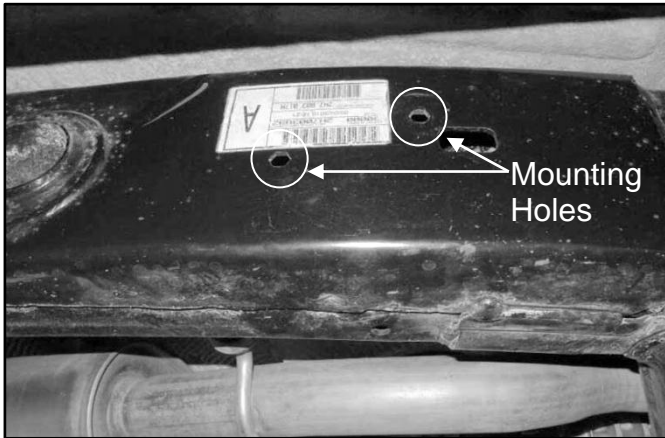
ITEM NO.	DESCRIPTION	QTY
3	M10 Flange Nut	12
4	8Gx12 truss HD SDS	16
-	-	-

STEPBOARD BRACKETS		
PART NO.	DESCRIPTION	QTY
9BV017	Driver's Front Bracket	1
9BV018	Passenger's Front Bracket	1
9BV019	Driver's Centre Bracket	1
9BV020	Passenger's Centre Bracket	1
9BV021	Driver's Rear Bracket	1
9BV022	Passenger's Rear Bracket	1

BEFORE INSTALLATION: PLEASE READ THESE INSTRUCTIONS CAREFULLY BEFORE INSTALLATION, PAYING SPECIAL ATTENTION TO ALL 'NOTES'. FAILURE TO DO SO MAY RESULT IN DAMAGE OF PARTS AND/OR INJURY TO INSTALLER OR CUSTOMER.

TOOLS REQUIRED: • TAPE MEASURE • 13 & 16MM SOCKET & RATCHET • 13 & 16MM RING/OPEN SPANNER • TORQUE WRENCH • WISS SNIP

FITTING PROCEDURE: Approx. fitting time 60 mins



Step 1. Move to the R/H (Driver) side of the vehicle. Locate front mounting position. Approximately 510mm from front wheel arch.

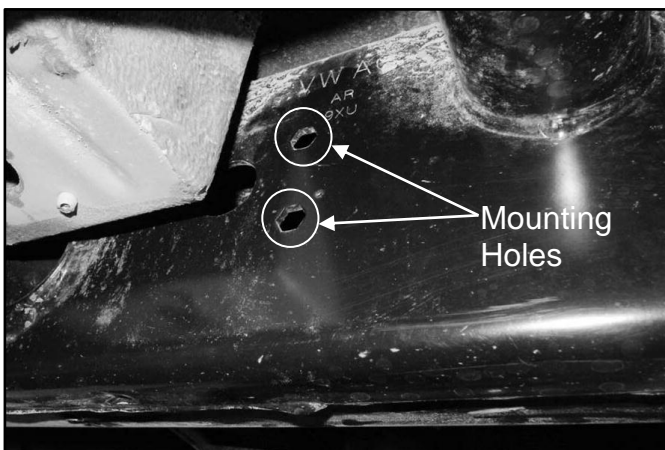


Step 2. Insert 2x M10 Wired Bolt [Item 2] into front bracket mounting holes.

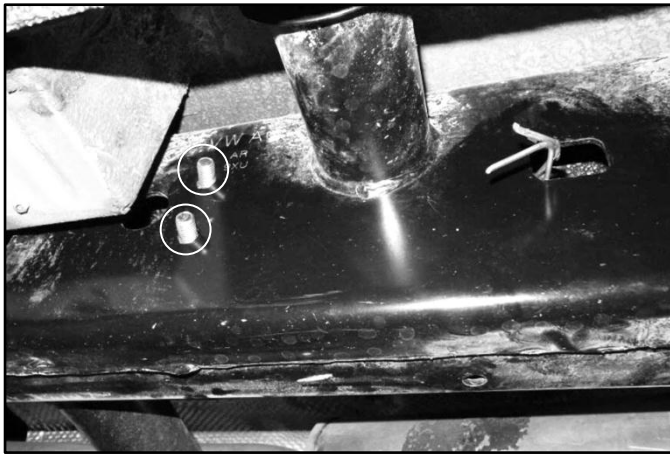


Step 3. Attach Driver's Front Bracket [9BV017] to the two Wired Bolts [Item 2]. Secure by using 2x M10 Flange Nut [Item 3]. Ensure bracket is level then tighten to **Max Torque 17Nm**.

NOTE: Trim excess wire



Step 4. Locate the centre mounting position, approximately 1015mm from the front wheel arch.

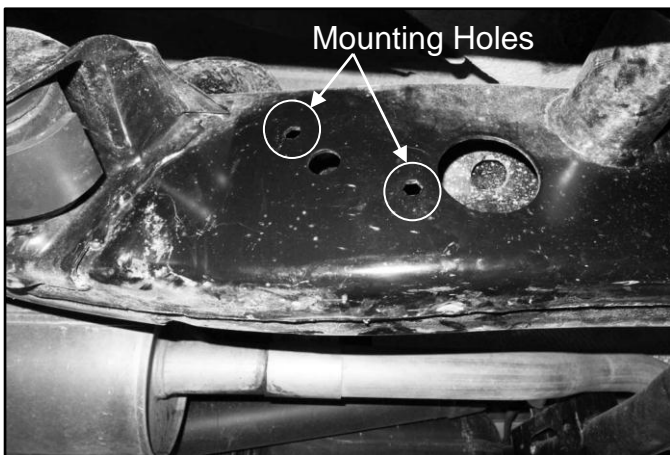


Step 5. Insert 2x M10 Wired Bolt [Item 2] into centre bracket mounting holes.



Step 6. Attach Driver's Centre Bracket [9BV019] to the two Wired Bolts [Item 2]. Secure by using 2x M10 Flange Nut [Item 3]. Ensure bracket is level then tighten to **Max Torque 17 Nm**.

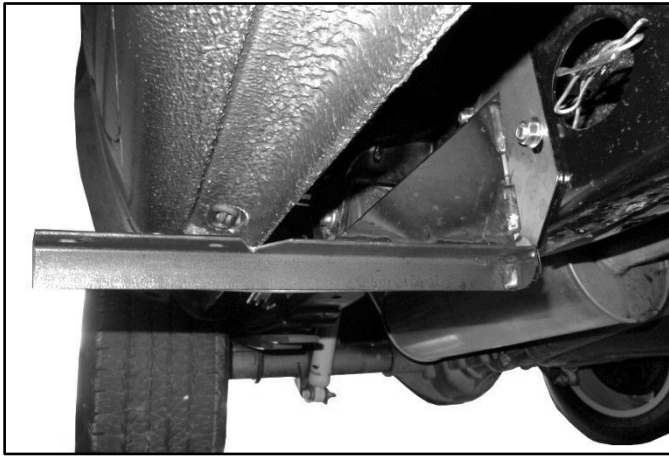
NOTE: Trim excess wire



Step 7. Locate rear mounting position, approximately 445mm from the rear wheel arch.

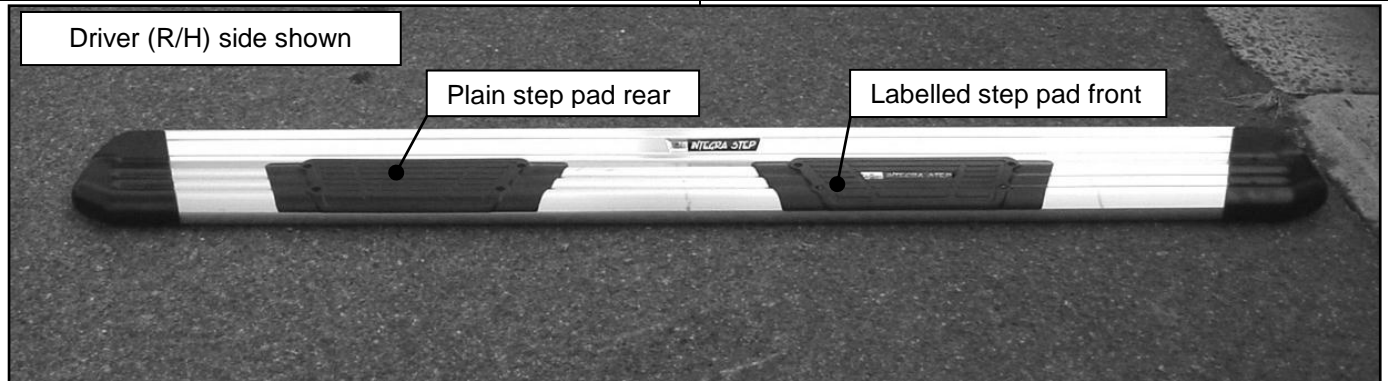


Step 8. Insert 2x M10 Wired Bolt [Item 2] into rear bracket mounting holes.



Step 9. Attach Driver's Rear Bracket [9BV021] to the two Wired Bolts [Item 2]. Secure by using 2x M10 Flange Nut [Item 3]. Ensure bracket is level then tighten to **Max Torque 17 Nm**.

NOTE: Trim excess wire



Step 10. OPTIONAL: Step pads can be installed on board. As a guide fit step pads under door centres, using 4x 8Gx12 truss HD SDS [Item 4] per step pad.



Step 11. Install stepboard to all brackets using 2x M8x11mm Flange Bolt [Item 1] per bracket. Position stepboard between the front and rear wheel arches.

Tighten all M8 bolts to 13Nm.

12. Now complete steps 1 – 11 for the L/H (Passenger) side of vehicle.

- Place “KINGSLEY SIDE STEP Warranty” on customer's front seat
- Clean the side steps if necessary using PH - Neutral soapy water ONLY