

FITTING INSTRUCTIONS

Part No: 30N230

NISSAN PATROL GU Series IV (with Flares)

Model Commencing 10/2004

ENDCAPS: Front - fitted with Upswept endcaps
Rear - TO BE FITTED AS PER INSTRUCTION

STEPPADS: Front - 1 pair with 'INTEGRA' label

HARDWARE KIT CONTENTS

ITEM NO.	DESCRIPTION	QTY
1	M8 x 11mm Flange Bolt	12
2	M8 x 20mm Flange Bolt	12
3	8Gx12mm truss hd sds	8

STEPBOARD BRACKETS

PART NO.	DESCRIPTION	QTY
9AP024	COMMON	6

BEFORE INSTALLATION: PLEASE READ THESE INSTRUCTIONS CAREFULLY BEFORE INSTALLATION, PAYING SPECIAL ATTENTION TO ALL 'NOTES'. FAILURE TO DO SO MAY RESULT IN DAMAGE OF PARTS AND/OR INJURY TO INSTALLER OR CUSTOMER.

TOOLS REQUIRED: • ELECTRIC DRILL OR EQUIV • PHILLIPS TIP INSERT BITS • TAPE MEASURE • 13MM SOCKET & RATCHET • 13MM RING/OPEN SPANNER • TORQUE WRENCH.

FITTING PROCEDURE

NOTE: The INTEGRA STEPBOARDS have been partly assembled and will need only to have the remaining endcap attached with two self-tapping screws from end of board and one self-drilling screw from above. See figure 1. With both boards assembled, lay them in a safe place to prevent damage and fit the brackets as per instructions below.

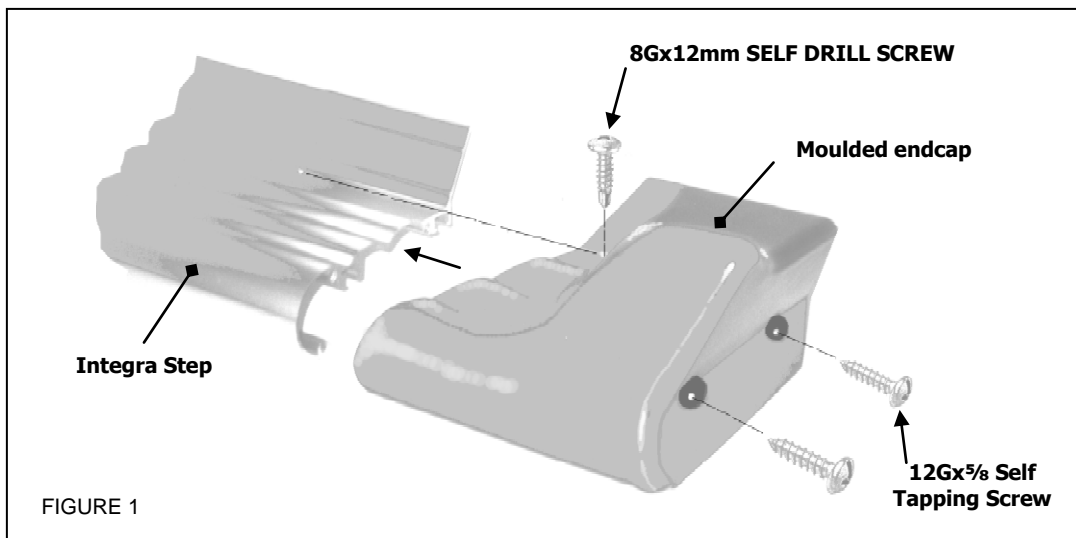
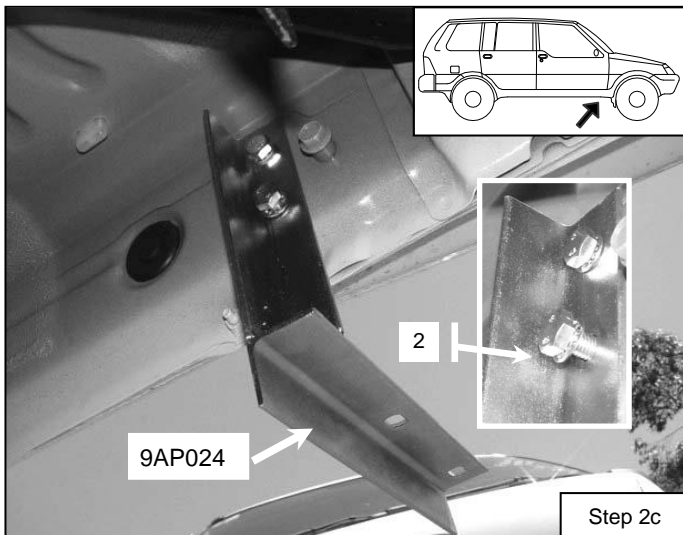
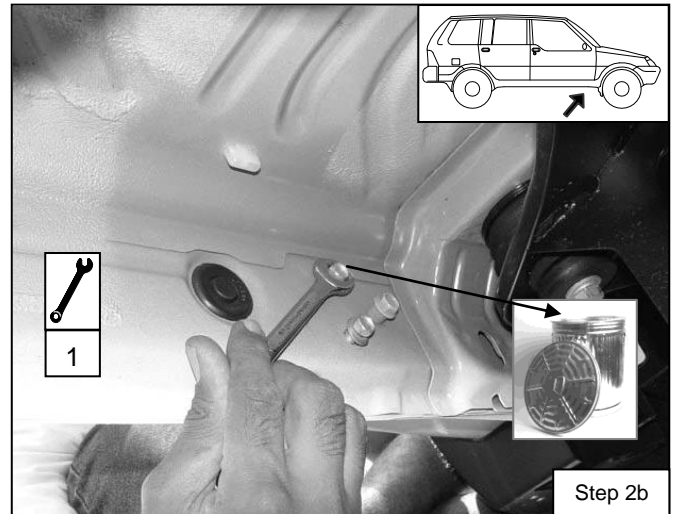
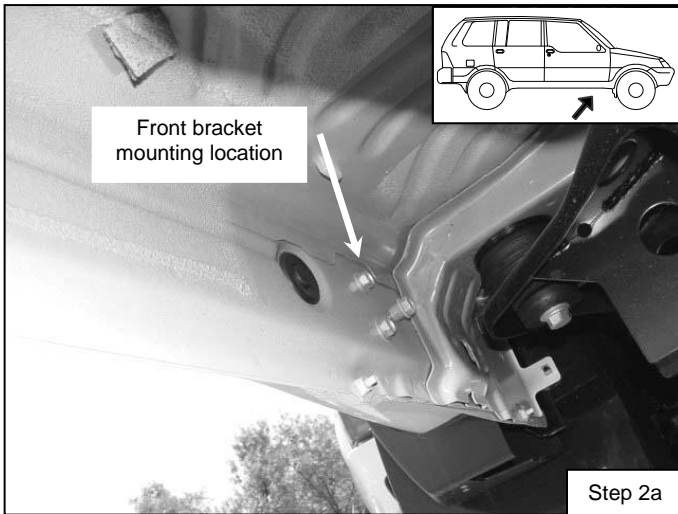


FIGURE 1

2. Move to the R/H (Driver's side) of the vehicle and proceed as follows.

2a. Locate front mounting location approx. 400mm from the front mudflap.

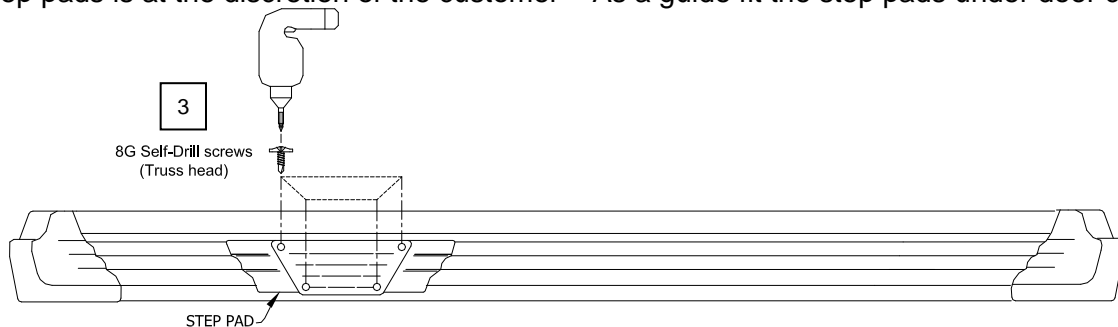


3. Attach the centre & rear brackets (9AP024) in the same manner as the front bracket:

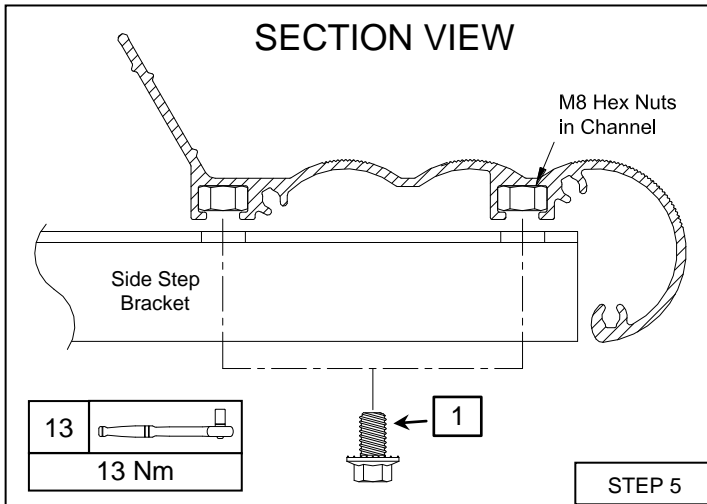
Centre bracket approx. 670mm from front bracket.

Rear Bracket approx. 560mm from centre bracket – Finger's tighten only at this stage.

4. **Optional:** You can now sit and mark the position of the step pads on the side step. Note: Location of step pads is at the discretion of the customer – As a guide fit the step pads under door centres.



STEP 4



5. Lift the Side Step back onto the brackets and position in the centre of the wheel arches. Secure the side step to the brackets using 2x M8x11mm flange bolts per bracket picking up nuts in the channels of the Side Step. Fingers tighten only.

6. Check that the Side Step is pushed in and parallel to the sill. Finally tighten all nuts and bolts before using the Side Step. Recommended max torque:

- M8 Bolts = 13Nm (10 ft.lb).

7. Repeat steps 1 ~ 6 for the L/H (Passengers) side of the vehicle.

- Place “KINGSLEY SIDE STEP Warranty” on customer’s front seat
- Clean the side steps if necessary using PH - Neutral soapy water ONLY

Your Integra Steps are now ready for use

In accordance with our policy of total quality commitment and customer service, we invite you to contact us on our toll free hotline should you have any questions
Telephone: (02) 9792 2566 or Toll Free 1800 654 767

Kingsley Enterprises Pty Ltd 123 Eldridge Road Bankstown NSW 2200 Australia