

KINGSLEY

***INTEGRA STEP®***

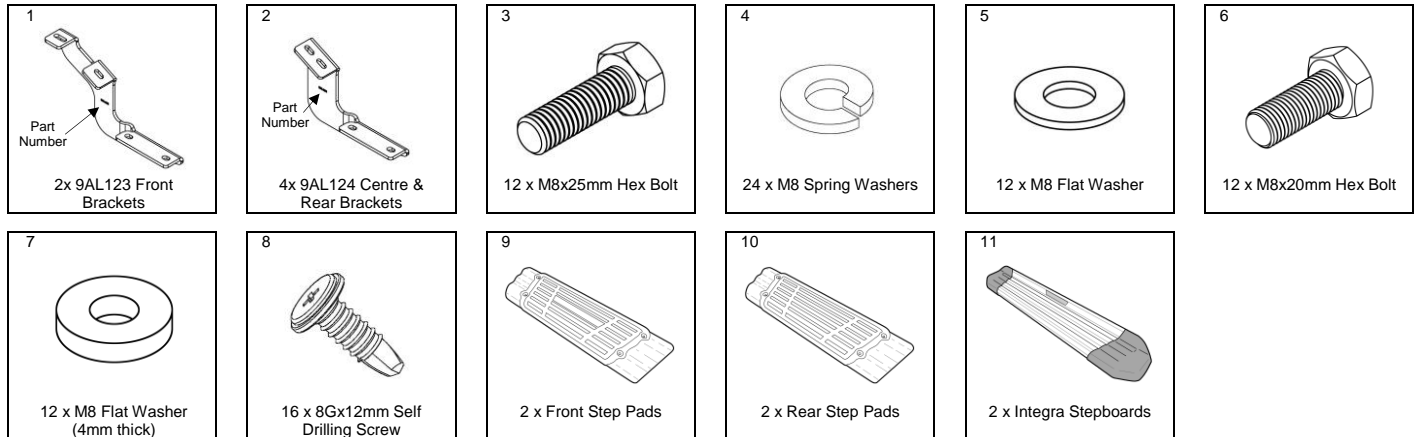
## FITTING INSTRUCTIONS

**Part No: 30T550**

**TOYOTA LANDCRUISER PRADO 150 SERIES 4WD**  
**Commencing 12/2009**

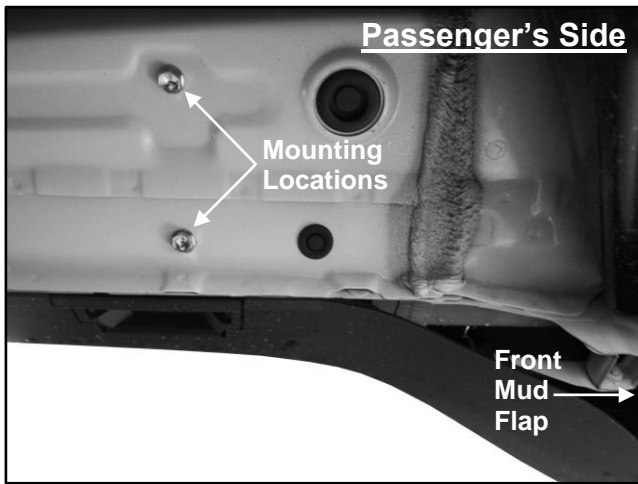


### Kit Contents (Approximate Fitting Time: 45 minutes)



**TOOLS REQUIRED:** • Tape Measure • 13mm Sockets / Spanners • Torque wrench • Drill • Phillips Drill Bit

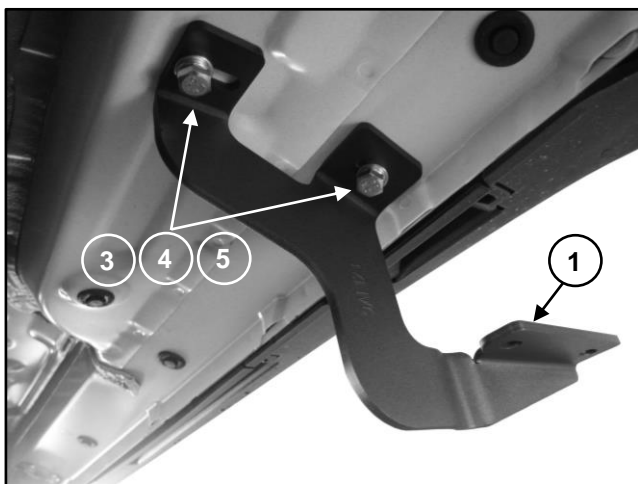
**BEFORE INSTALLATION:** Please read these instructions carefully before installation, paying special attention to all 'Notes'. Failure to do so may result in damage of parts and/or injury to the installer or customer.  
Place side steps in a safe place until required.



**Step 1. Move to the L/H (Passenger's) side of the vehicle.**

Locate the 2 x captive nuts (or factory bolts, where fitted) at the front bracket mounting position, approximately 330mm from the front mud flap.

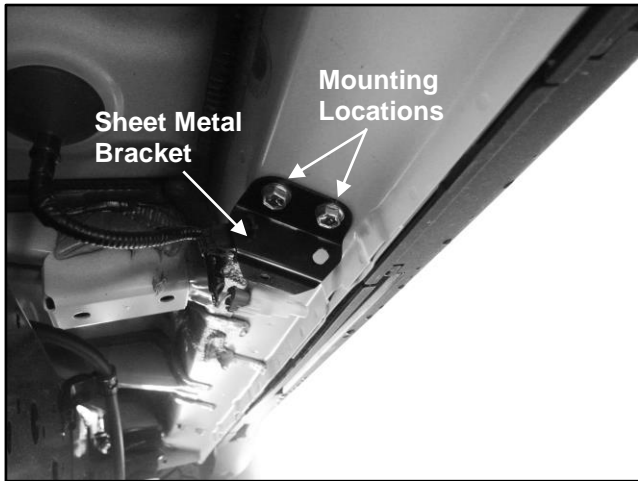
Remove and discard the 2 x factory bolts, if fitted.



**Step 2. Attach the Front Bracket [Item 1] to the front mounting position using:**

- 2 x M8 Hex Bolts [Item 3]
- 2 x M8 Spring Washers [Item 4]
- 2 x M8 Flat Washers [Item 5]

Ensure the bracket is level and square, then tighten to **Max Torque 13 Nm**.

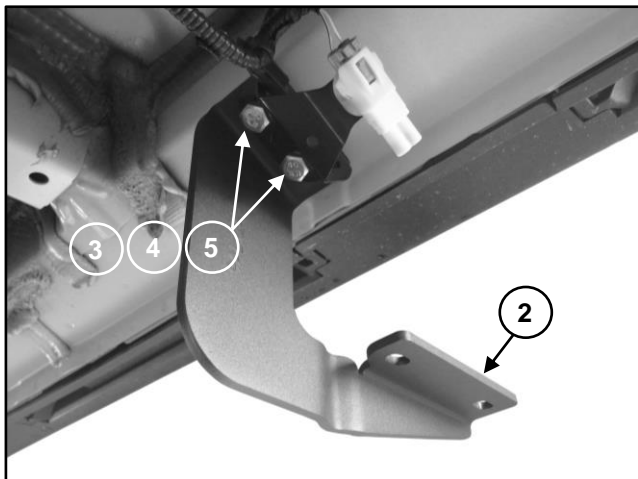


**Step 3. Move to the centre of the vehicle.**

Locate the 2 x captive nuts (or factory bolts, where fitted) at the centre bracket mounting position, approximately 1000mm from the front mud flap.

Remove and discard the 2 x factory bolts, if fitted.

Retain the sheet metal bracket, if fitted.

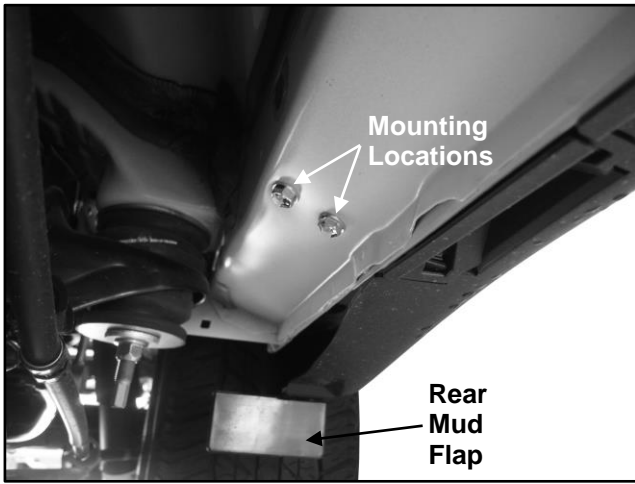


**Step 4. Attach the Centre & Rear Bracket [Item 2] to the centre mounting position using:**

- 2 x M8 Hex Bolts [Item 3]
- 2 x M8 Spring Washers [Item 4]
- 2 x M8 Flat Washers [Item 5]

**Note:** If sheet metal bracket is fitted, reconfigure it as shown and then fit on top of the bracket (in between the bracket face and the M8 Flat Washers [Item 5]).

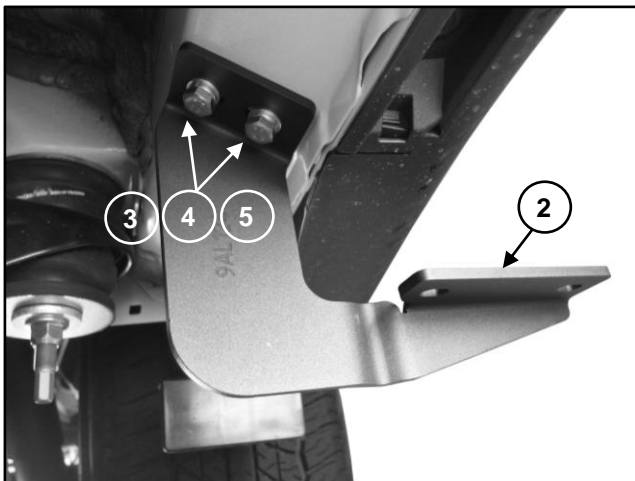
Ensure the bracket is level and square, then tighten to **Max Torque 13 Nm**.



**Step 5. Move to the rear of the vehicle.**

Locate the 2 x captive nuts (or factory bolts, where fitted) at the rear bracket mounting position, approximately 250mm from the rear mud flap.

Remove and discard the 2 x factory bolts, if fitted.



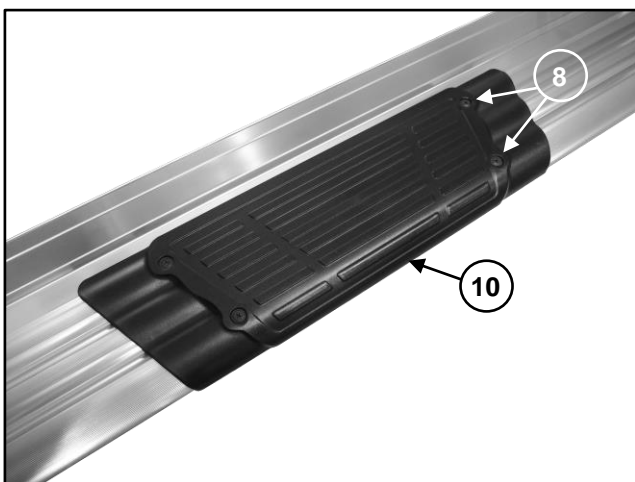
**Step 6. Attach the Centre and Rear Bracket [Item 2] to the rear mounting position using:**

- 2 x M8 Hex Bolts [Item 3]
- 2 x M8 Spring Washers [Item 4]
- 2 x M8 Flat Washers [Item 5]

Ensure the bracket is level and square, then tighten to **Max Torque 13 Nm**.



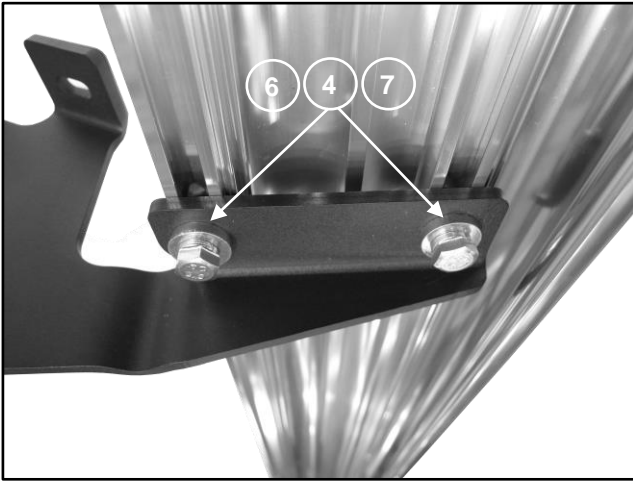
**Step 7. Repeat Steps 1 – 6 to fit the remaining brackets to the R/H (Driver's) side of the vehicle.**



**Step 8. Optional**

Step pads [Item 9 & 10] can be installed onto Stepboards [Item 11]. As a guide, fit step pads under door centres using 4 x Self Drilling Screws [Item 8] per step pad.

**Note:** Ensure Stepboards are positioned on the correct side of the vehicle before fitting step pads.



**Step 9.** Install Stepboards to both sides of vehicle using the following quantity of fasteners for each bracket:

2 x M8 Hex Bolts **[Item 6]**

2 x M8 Spring Washers **[Item 4]**

2 x M8 Thick Flat Washers **[Item 7]**

Position Stepboards 5-10 mm behind front mud flaps.

**Tighten all M8 bolts to 13 Nm.**

- Place “KINGSLEY SIDE STEP Warranty” on customer’s front seat
- Clean the Side Steps if necessary using PH - Neutral soapy water ONLY

**Your Stepboards are now ready for use**