

FITTING INSTRUCTIONS

**Part No: 30J210
JEEP CHEROKEE KJ 4WD
Model Commencing 09/2001**

ENDCAPS: Front – Fitted with Flat endcaps
Rear – TO BE FITTED AS PER INSTRUCTIONS

STEPPADS: Front - 1 pair with 'INTEGRA' Label
Rear - NIL

HARDWARE KIT CONTENTS

PART NO.	DESCRIPTION	QTY
91Z017	M8 flange nut	18
91Z116	12Gx5/8 pxr sts	4
91Z012	M8 wired bolt (250mm wire length)	14
91Z012A	M8 wired bolt (350mm wire length)	5

PART NO.	DESCRIPTION	QTY
91Z104	8Gx12mm truss hd sds	8
91Z115	8Gx12mm pxr sds	2
91Z000	M8 x 11mm Flange Bolt	12
97Z900	Rust inhibiting compound	2

STEPBOARD BRACKETS

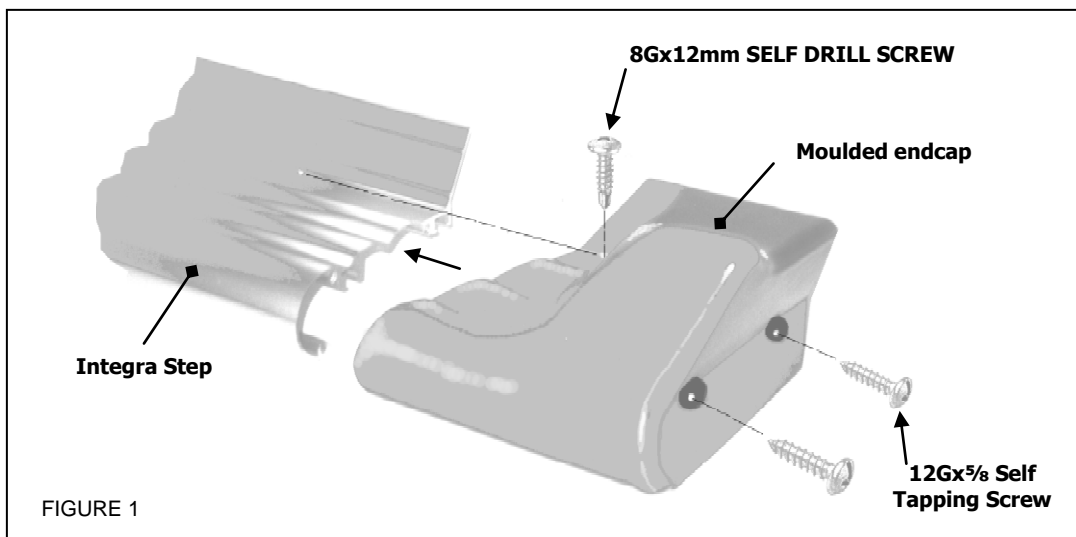
PART NO.	DESCRIPTION	QTY
9AV024	Front Bracket	2
9AV025	Centre Bracket	2
9AV026	Rear Bracket	2

BEFORE INSTALLATION: PLEASE READ THESE INSTRUCTIONS CAREFULLY BEFORE INSTALLATION, PAYING SPECIAL ATTENTION TO ALL 'NOTES'. FAILURE TO DO SO MAY RESULT IN DAMAGE OF PARTS AND/OR INJURY TO INSTALLER OR CUSTOMER.

TOOLS REQUIRED: • ELECTRIC DRILL OR EQUIV. • 3 & 9MM DRILL BITS • NO. 2 PHILLIPS TIP INSERT BIT • TAPE MEASURE • MARKING PEN • 13 MM SOCKET & RATCHET • 13MM SPANNER • HAMMER • CENTRE PUNCH • TORQUE WRENCH.

FITTING PROCEDURE

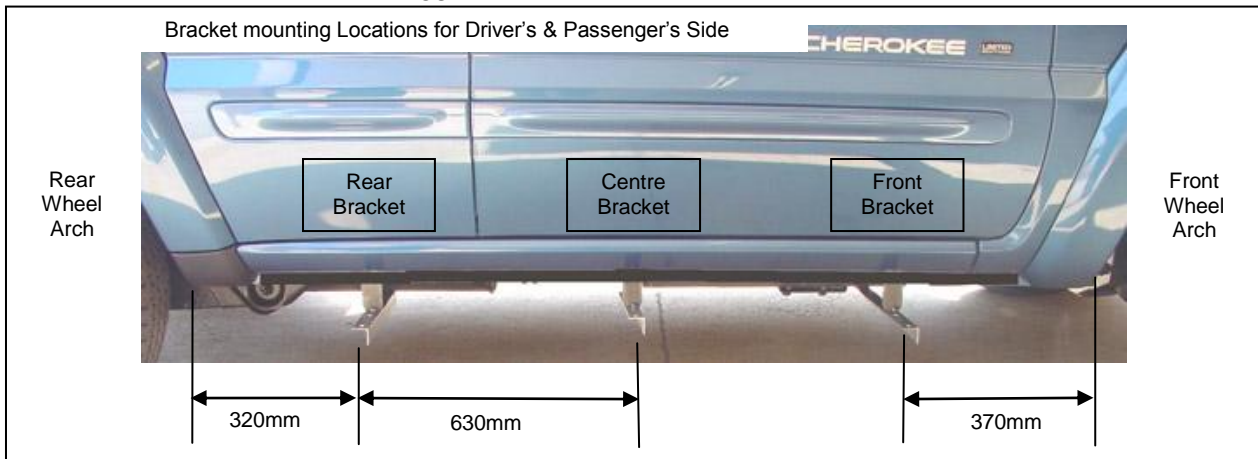
NOTE: The INTEGRA STEPBOARDS have been partly assembled and will need only to have the remaining endcap attached with two self-tapping screws from end of board and one self-drilling screw from above. See figure 1. With both boards assembled, lay them in a safe place to prevent damage and fit the brackets as per instructions below.



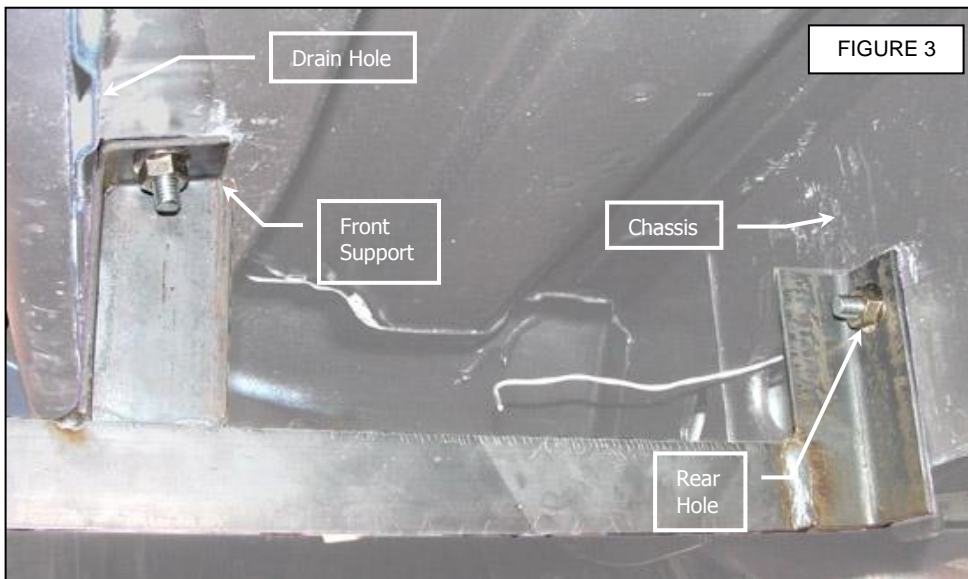
1. Move to the Driver's (RH) side of the vehicle and proceed as follows.

Place the front bracket (9AV024) 370mm behind the front wheel arch in between the chassis and the sill – See *Figure 2* & 3.

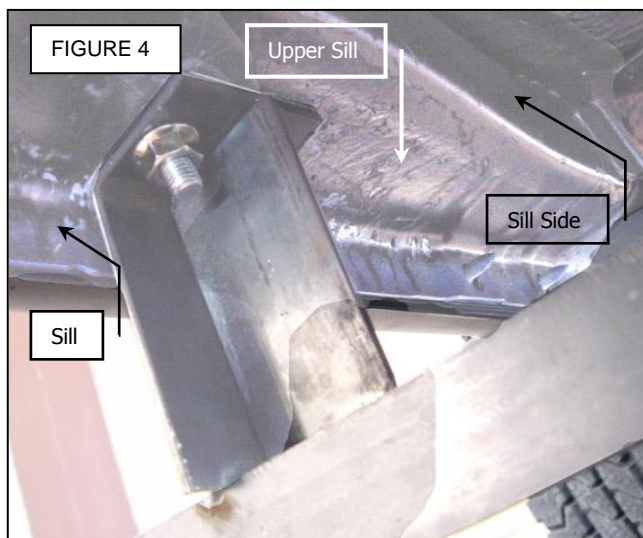
FIGURE 2



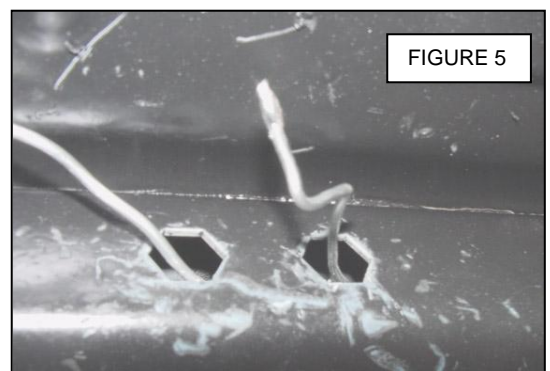
2. Position the front support of the bracket hard up and in to the upper sill (**Note:** Position in front of a drain hole) – See *Figure 3* & 4. Mark the location of the two slots in the bracket to the upper sill then remove the bracket and centre punch the centre of the marks. Drill a $\varnothing 3\text{mm}$ pilot hole to start with and then open the holes to $\varnothing 9\text{mm}$.
3. Apply rust inhibitor to the raw metal edges to prevent corrosion from developing.



4. Insert a wired bolt (use the longer wired bolts, 350mm in length, for the front brackets only) through each of the hexagonal holes located in the centre of the sill-side then out the $\varnothing 9\text{mm}$ holes – See *Figure 4* & 5. Fingers tighten with M8 flange nuts.
5. Repeat steps 1 to 4 to attach the centre (9AV025) and rear (9AV026) brackets at the locations shown in *figure 2*.

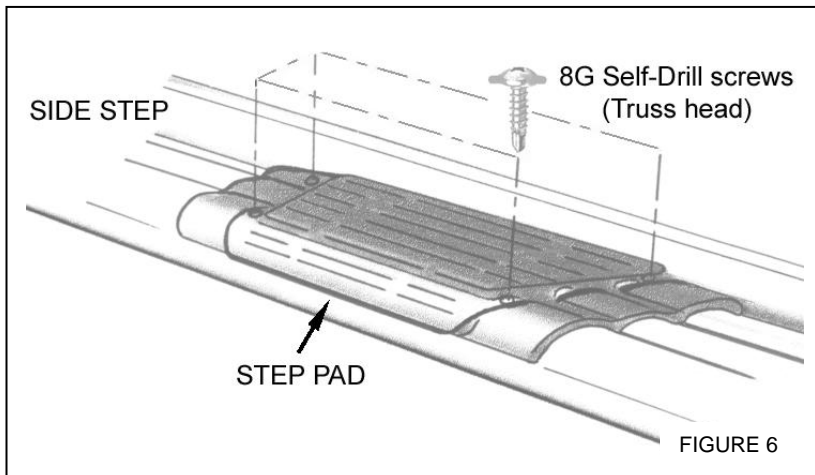


↑
Passenger Side Brackets shown
↶

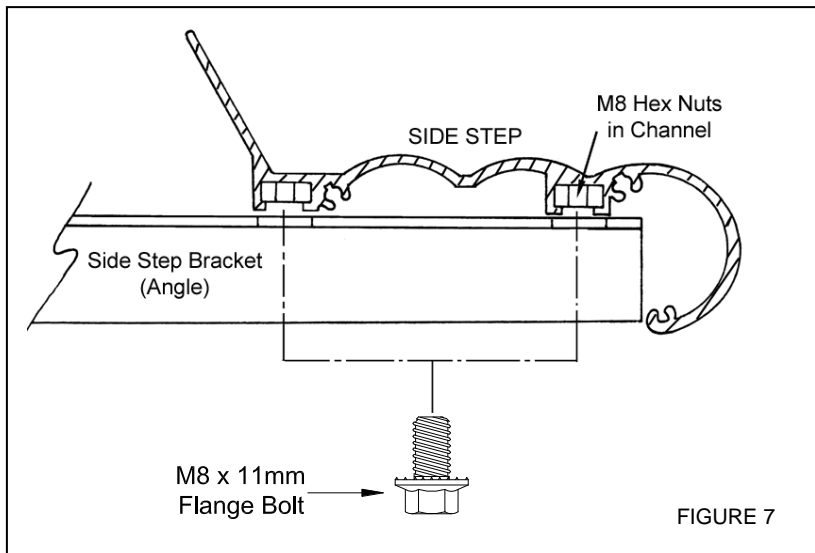


NOTE: Insert the two wired bolts for the CENTRE bracket through the same hexagonal holes used for the front bracket, but first you must completely push in the existing wire into the hole. The REAR bracket has two separate holes for the wired bolts that are towards the rear of the vehicle.

6. Position the side step onto the brackets so that it sits parallel to the sill. Ensure the side step is sitting on all three brackets and that the brackets are square to the sill (pivot them and use a level if required)
7. Mark the rear hole of each bracket onto the chassis. Remove the side step and then centre punch the centre of the mark – See *Figure 3*.
8. Drill a $\varnothing 3\text{mm}$ pilot hole to start with and then open the holes to $\varnothing 9\text{mm}$. Rust inhibit raw metal edges as in step 3. Insert a wired bolt through any existing access hole in the chassis that is closest to each individual bracket then out the $\varnothing 9\text{mm}$ hole of each bracket. Tighten brackets with M8 flange nuts.



Optional: You can now sit and mark the position of the step pads on the side step. Note: Location of step pads is at the discretion of the customer – As a guide fit the step pads under door centres. Lift the side step off the brackets and secure the Step Pad using self drilling screws provided in kit - See *figure 6*.



9. Lift the side step onto the brackets and secure the step to the brackets using M8 x 11mm flange bolts, picking up the nuts in the channels of the step. Fingers tighten only – See *Figure 7*.

10. Check that the side step is pushed in towards the sill and there is a 2~3mm gap between the flares and the end caps. Finally tighten all nuts and bolts before using the side step. Recommended maximum torque on all bolts = 13.5Nm (10 ft/lb).

IMPORTANT: Bend all wires into their holes or neatly bend them in a safe position against the metal under body.

11. Move to the passenger's side and repeat steps 1~10.

Clean the side steps if necessary using soapy water ONLY.

Your Integra Steps are now ready for use

In accordance with our policy of total quality commitment and customer service, we invite you to contact us on our toll free hotline should you have any questions

Telephone: (02) 9792 2566 or Toll Free 1800 654 767

Kingsley Enterprises Pty Ltd 123 Eldridge Road Bankstown NSW 2200 Australia