

Kingsley

STEPBOARDS®

FITTING INSTRUCTIONS

Part No: 18M950
MERCEDES BENZ G CLASS
Model Commencing 11/2005

END CAPS / MUDFLAPS:

Front – 1 pair Plastic BULLNOSE
Rear – 1 pair Plastic BULLNOSE

HARDWARE KIT CONTENTS

ITEM NO.	DESCRIPTION	QTY
1	M8 x 20mm Rail Bolt	2
2	M8 Flange Nut	12
3	M8 Wired Bolt	2
4	M6 x 20mm Hi Tensile Hex Bolt	4
5	1/4" x 9/16" 18g flat washer	8

ITEM NO.	DESCRIPTION	QTY
6	M6 Nyloc Nut	4
7	M8x11 Flange Bolt	22
8	Rust Inhibitor	1
9	M8 x 14 Bolt	8
10	M8 Hex Nut	22

STEPBOARD BRACKETS

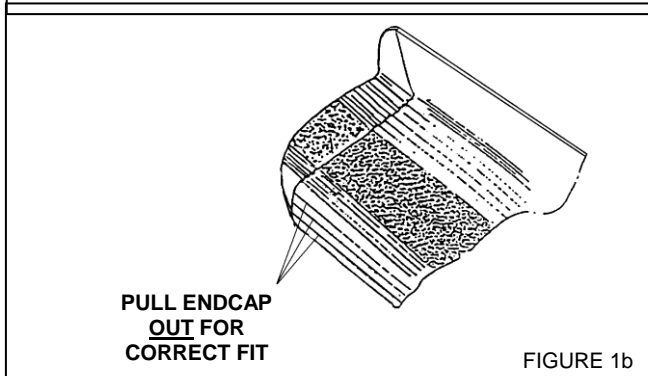
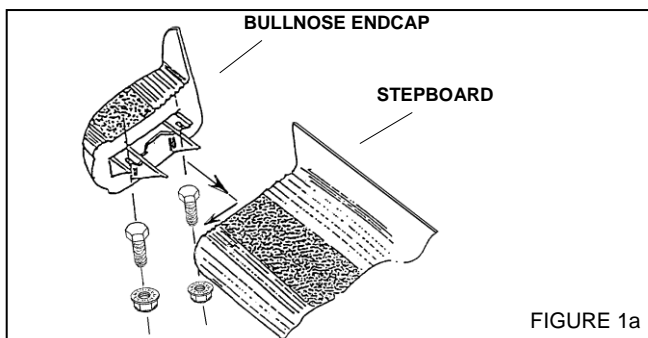
PART NO.	DESCRIPTION	QTY
9BR011	Front Common Bracket	2
9BR012	L/H Rear Bracket	1
9BR013	R/H Rear Bracket	1
9AP038	Rail	2

BEFORE INSTALLATION: PLEASE READ THESE INSTRUCTIONS CAREFULLY BEFORE INSTALLATION, PAYING SPECIAL ATTENTION TO ALL 'NOTES'. FAILURE TO DO SO MAY RESULT IN DAMAGE OF PARTS AND/OR INJURY TO INSTALLER OR CUSTOMER.

TOOLS REQUIRED: • ELECTRIC DRILL OR EQUIV • 8.5MM, 6.5MM & 3MM DRILL BITS • PHILLIPS TIP INSERT BITS • TAPE MEASURE • 10MM & 13MM SOCKET & RATCHET • 10MM & 13MM RING/OPEN SPANNER • TORQUE WRENCH • MARKING PEN • CENTRE PUNCH • WISS SNIPS/SHEARS.

FITTING PROCEDURE

Approx. fitting time 3.5 hrs



1. **Assemble the side step as follows:** Attach a moulded EndCap to one side step using two (2) M8 x 14mm bolts (gold colour) and two (2) M8 flange nuts, **See figure 1a.**

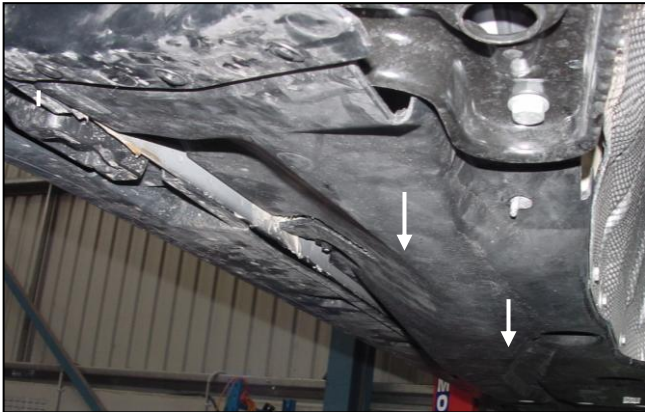
IMPORTANT: BEFORE YOU TIGHTEN THE ENDCAP, MAKE SURE THAT YOU PULL THE ENDCAP OUT SO THAT THE ENDCAP EDGE FULLY COVERS THE RAISED FEATURES ON THE SIDE STEP EDGE, **See figure 1b.**

- a. Slide nine (9) M8 hex nuts, into the outer channel, and (2) M8 hex nuts, into the inner channel.
- b. Complete the Stepboard Assembly by attaching to the rear of the board the bullnose endcap in the same manner as for part 1. **See Figures (1a & 1b)**

Repeat for the remaining board and place the Stepboards in a safe place to prevent damage.



Step 2. Move to the R/H (Driver) side of the vehicle. Remove front plastic under body cover. Retain all clips, nuts and screws.



Step 3. Remove rear plastic under body cover. Retain all clips, nuts and screws.



Step 4. Remove plastic sill guard to expose vehicle sill. Use a small screwdriver to release clips. **Be careful not to force clips or they will break!**



Step 5. Locate front bracket mounting position approx 330mm from front wheel arch. There is a small flat surface in which the bracket will fit. Hold bracket (9BR011) level and square and mark position for hole to be drilled. Note: In some cases the glue material may need to be trimmed for a smooth mounting surface



Step 6. Drill pilot hole, then open up to Ø8.5mm hole. Apply rust inhibitor (item 8) to the raw metal edges.



Step 7. Remove oval bung, located just above the hole drilled in step 5. Retain bung.



Step 8. Insert wired bolt (item 3) in oval hole and have the thread of bolt protrude through the drilled hole.



Step 9. Finger tighten bracket to wired bolt with M8 flange nut (item 2).



Step 10. Mark position of hole to be drilled through sill, ensure bracket is again level and square. Hole position is approx 13mm up from bottom edge. Drill pilot hole then open up to Ø6.5mm



Step 11. Insert M6 x 20mm bolt (item 4) with 1 x flat washer (item 5) against head of bolt and 1 x flat washer against nut. Secure bracket to sill using M6 nyloc nut (item 6). Tighten M6 nut to 7Nm torque.
Finally tighten M8 flange nut to 13Nm torque.



Step 12. Locate rear bracket mounting position approx 240mm from rear wheel arch. Remove rubber bung with a small screwdriver and discard.



Step 13. Insert rail bolt (item 1) into large hole



Step 14. Install rear drivers bracket (9BR013) using M8 flange nut (item 2). Finger tighten only.



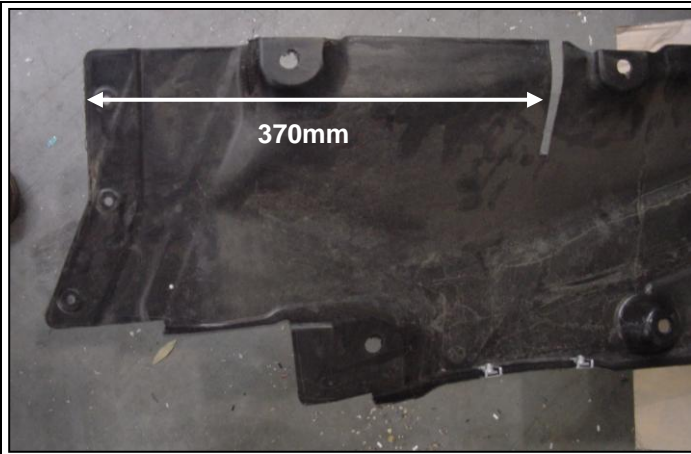
Step 15. With Bracket square and level mark position of hole to be drilled through sill. Hole position is approx 13mm up from bottom edge. Drill pilot hole then open up to $\text{Ø}6.5\text{mm}$



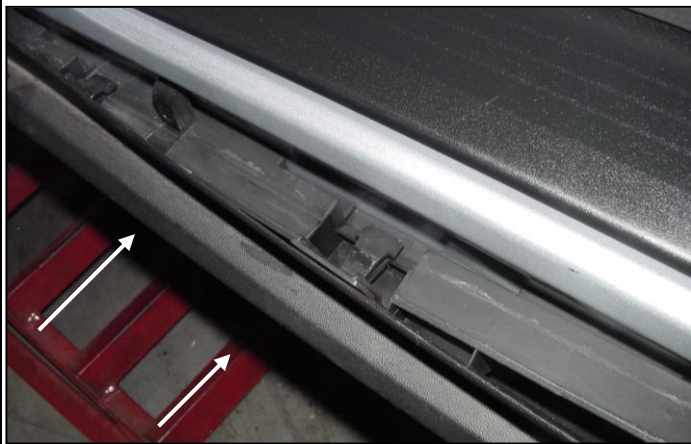
Step 16. Insert M6 x 20mm bolt (item 4) with 1 x flat washer (item 5) against head of bolt and 1 x flat washer against nut. Secure bracket to sill using M6 nyloc nut (item 6). Tighten M6 nut to 7Nm torque. Finally tighten M8 flange nut to 13Nm torque



Step 17. Mark and cut rear rear plastic under body guard, to allow brackets to sit through. Make the cut 80mm long and 40mm wide in the position shown.



Step 18. Mark and cut front plastic under body guard, to allow brackets to sit through. Make the cut 100mm long and 6mm wide in the position shown. (Note: distance for **passenger** side is **405mm** from front edge not 370mm).



Step 19. Re-install all plastic under body guarding and sill guard using the hardware removed in steps 2 – 4.



Step 20. Install rail on bottom of step (9AP038). Insert 7 x M8 x11 flange bolts (item 7), picking up captive nuts in channel. **Note:** 2 spare nuts must be located at either end of rail for installation of brackets. Before tightening ensure rail is located centrally between front and rear bracket. Tighten to 13Nm.



Step 21. Finally install stepboard to brackets using 2 x M8 x 11mm flange bolts (item 7) per bracket. Tighten to 13Nm.

22. Now complete steps 1 – 21 for the L/H (Passenger) side of vehicle.

- Place “KINGSLEY SIDE STEP Warranty” on customer’s front seat
- Clean the side steps if necessary using PH - Neutral soapy water ONLY

Your Stepboards are now ready for use

***In accordance with our policy of total quality commitment and customer service, we invite you to contact us on our toll free hotline should you have any questions
Telephone: (02) 8700 0400 or Toll Free 1800 654 767***

Kingsley Enterprises Pty Ltd 6A Brooks Road Ingleburn NSW 2565 Australia