

FITTING INSTRUCTIONS

Part No: 35T550

TOYOTA LANDCRUISER PRADO 150 SERIES 4WD

Model Commencing 12/2009

ENDCAPS: Front - fitted with Standard endcaps (notched)
Rear - fitted with Standard endcaps (notched)

STEPPADS: Front - 1 pair PLAIN
Rear - 1 pair PLAIN

HARDWARE KIT CONTENTS

ITEM NO.	DESCRIPTION	QTY
1	M8 x 20 Flange Bolts	12
2	8Gx12mm truss hd sds	16

ITEM NO.	DESCRIPTION	QTY
3	Step Pad	4
4	M8 x 11mm Flange Bolt	12

STEPBOARD BRACKETS

PART NO.	DESCRIPTION	QTY
9AL110	Front Bracket Common	2
9AL111	Centre & Rear Common Bracket	4

BEFORE INSTALLATION: PLEASE READ THESE INSTRUCTIONS CAREFULLY BEFORE INSTALLATION, PAYING SPECIAL ATTENTION TO ALL 'NOTES'. FAILURE TO DO SO MAY RESULT IN DAMAGE OF PARTS AND/OR INJURY TO INSTALLER OR CUSTOMER.

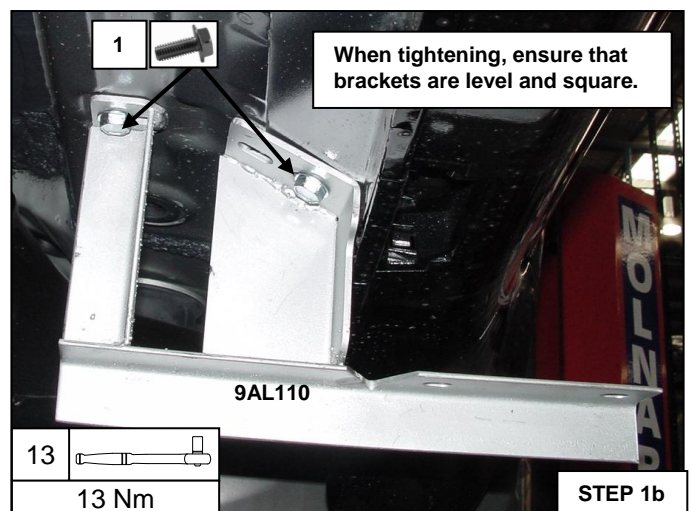
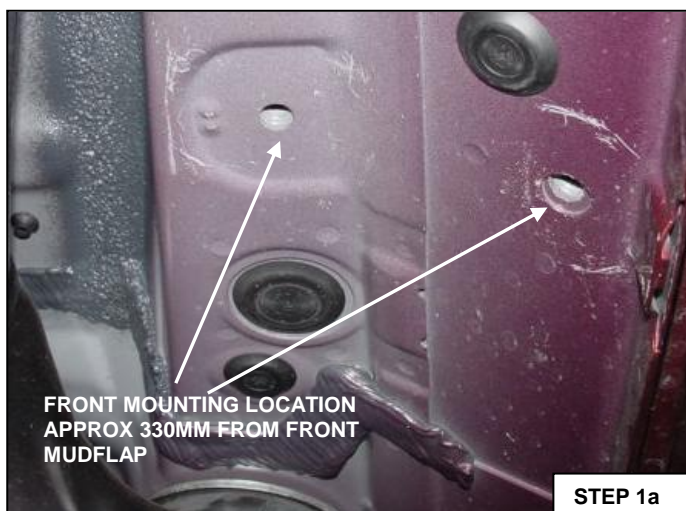
TOOLS REQUIRED: • ELECTRIC DRILL OR EQUIV • PHILLIPS TIP INSERT BITS • TAPE MEASURE • 13MM SOCKET & RATCHET • 13MM RING/OPEN SPANNER • TORQUE WRENCH.

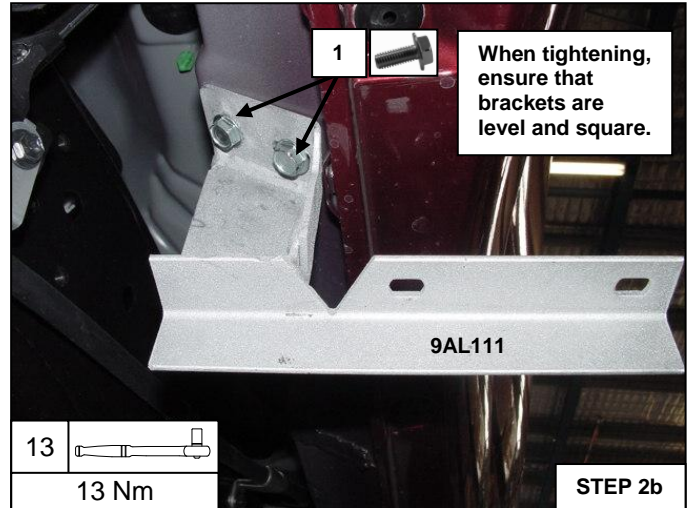
FITTING PROCEDURE

Approx. fitting time 45mins

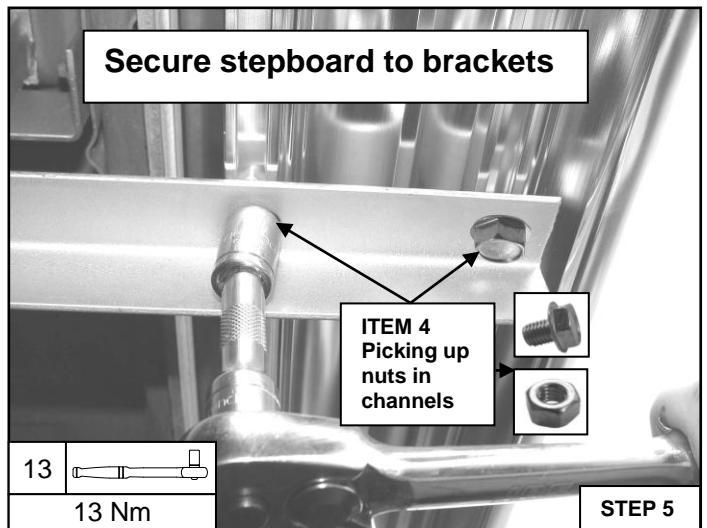
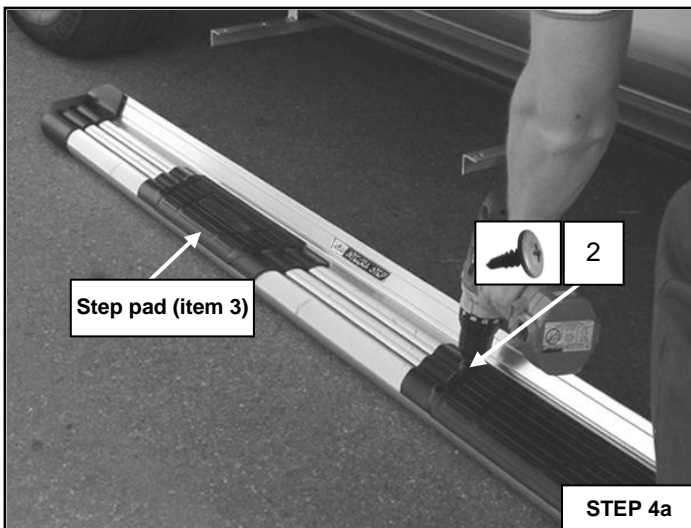
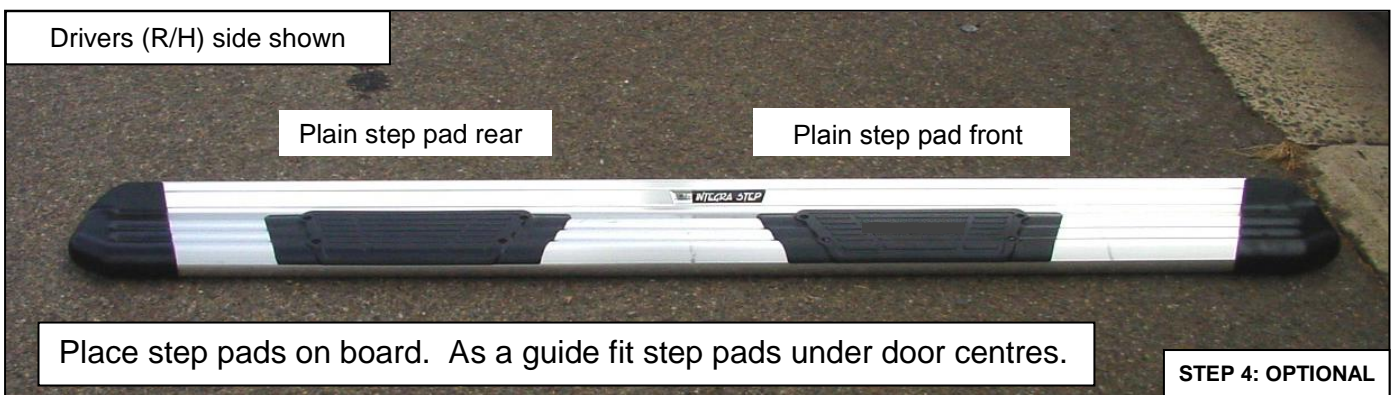
NOTE: The SIDE STEPS have been assembled with the hex nuts already inserted into the board channels for your convenience. For now, lay them in a safe place to prevent damage and fit the brackets as per instructions below.

1. Move to the R/H (Drivers) side of the vehicle and proceed as follows.





3. Now repeat steps 2a & 2b for the rear bracket approx. 250mm from rear wheel arch.



6. Now complete steps 1 – 5 for the L/H (Passenger's) side of vehicle.

- Place "KINGSLEY SIDE STEP Warranty" on customer's front seat
- Clean the side steps if necessary using PH - Neutral soapy water ONLY

Your Integra Steps are now ready for use

In accordance with our policy of total quality commitment and customer service, we invite you to contact us on our toll free hotline should you have any questions

Telephone: (02) 8700 0400 or Toll Free 1800 654 767

Kingsley Enterprises Pty Ltd 6a Brooks Road Ingleburn NSW 2565 Australia