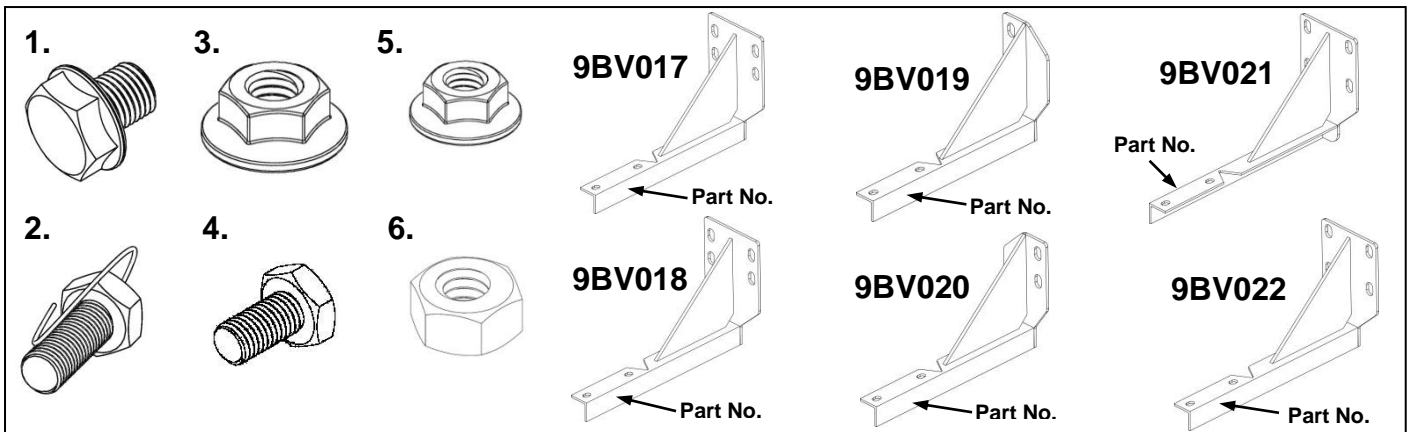


FITTING INSTRUCTIONS: SIDE STEPS

Part No: 18V20D
VW AMAROK DUAL CAB
Model Commencing 03/2011



ENDCAPS: Front – 1 pair Plastic Bullnose
 Rear – 1 pair Plastic Bullnose



| HARDWARE KIT CONTENTS | | |
|-----------------------|----------------|-----|
| ITEM NO. | DESCRIPTION | QTY |
| 1 | M8 Flange Bolt | 12 |
| 2 | M10 Wired Bolt | 12 |
| 3 | M10 Flange Nut | 12 |

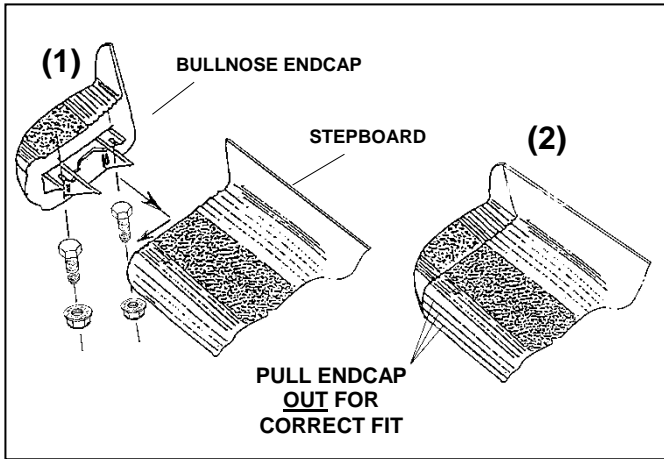
| ITEM NO. | DESCRIPTION | QTY |
|----------|------------------|-----|
| 4 | M8x14mm Hex Bolt | 8 |
| 5 | M8 Flange Nut | 8 |
| 6 | M8 Hex Nut | 12 |

| STEPBOARD BRACKETS | | |
|--------------------|----------------------------|-----|
| PART NO. | DESCRIPTION | QTY |
| 9BV017 | Driver's Front Bracket | 1 |
| 9BV018 | Passenger's Front Bracket | 1 |
| 9BV019 | Driver's Centre Bracket | 1 |
| 9BV020 | Passenger's Centre Bracket | 1 |
| 9BV021 | Driver's Rear Bracket | 1 |
| 9BV022 | Passenger's Rear Bracket | 1 |

BEFORE INSTALLATION: PLEASE READ THESE INSTRUCTIONS CAREFULLY BEFORE INSTALLATION, PAYING SPECIAL ATTENTION TO ALL 'NOTES'. FAILURE TO DO SO MAY RESULT IN DAMAGE OF PARTS AND/OR INJURY TO INSTALLER OR CUSTOMER.

TOOLS REQUIRED: • TAPE MEASURE • 13 & 16MM SOCKET & RATCHET • 13 & 16MM RING/OPEN SPANNER • TORQUE WRENCH • WISS SNIP

FITTING PROCEDURE: Approx. fitting time 60 mins

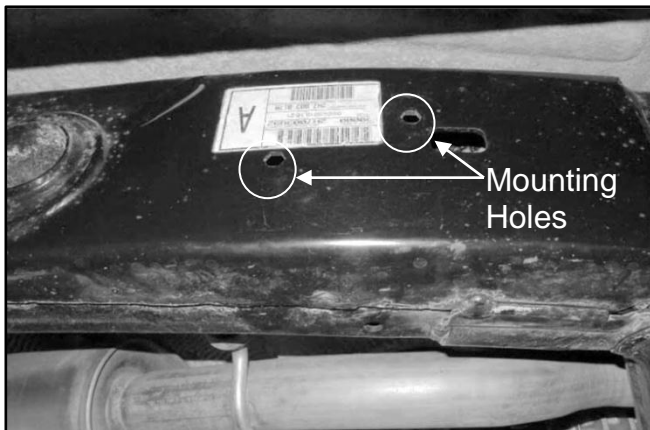


Step 1. Assemble the side step as follows: Attach a moulded End Cap to one side step using 2x M8x14mm Hex Bolt [Item 4] and 2x M8 Flange Nut [Item 5]. (1)

Step 1a. Slide into the underside channels of the side step 3x M8 Hex Nuts [Item 6], that is, six (6) Hex Nuts per side step.

Step 2. Complete the Stepboard Assembly by attaching to the rear of the board the other End Cap in the same manner as for Step 1. (2)

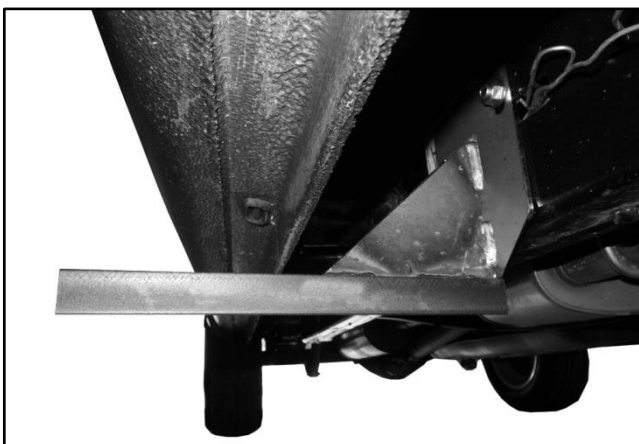
Repeat for the remaining board and place the Stepboards in a safe place to prevent damage.



Step 3. Move to the R/H (Driver) side of the vehicle. Locate front mounting position. Approximately 510mm from front wheel arch.

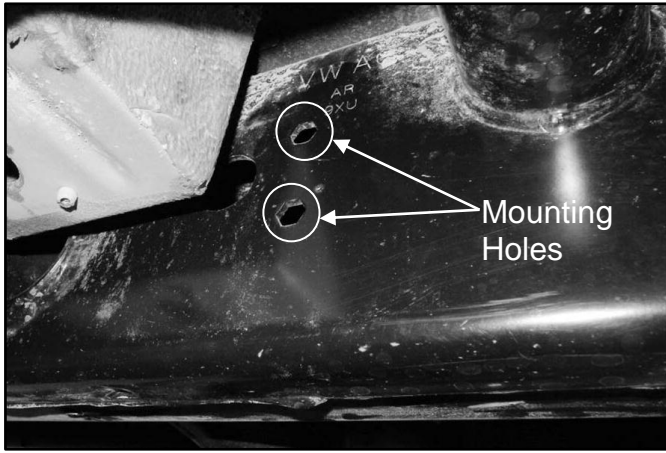


Step 4. Insert 2x M10 Wired Bolt [Item 2] into front bracket mounting holes.



Step 5. Attach Driver's Front Bracket [9BV017] to the two Wired Bolts [Item 2]. Secure by using 2x M10 Flange Nut [Item 3]. Ensure bracket is level then tighten to **Max Torque 17Nm**.

NOTE: Trim excess wire



Step 6. Locate the centre mounting position, approximately 1015mm from the front wheel arch.

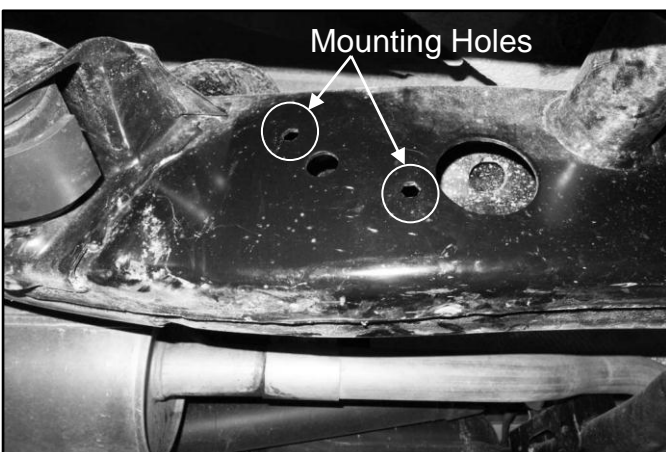


Step 7. Insert 2x M10 Wired Bolt [Item 2] into centre bracket mounting holes.



Step 8. Attach Driver's Centre Bracket [9BV019] to the two Wired Bolts [Item 2]. Secure by using 2x M10 Flange Nut [Item 3]. Ensure bracket is level then tighten to **Max Torque 17 Nm**.

NOTE: Trim excess wire



Step 9. Locate rear mounting position, approximately 445mm from the rear wheel arch.



Step 10. Insert 2x M10 Wired Bolt [Item 2] into rear bracket mounting holes.



Step 11. Attach Driver's Rear Bracket [9BV021] to the two Wired Bolts [Item 2]. Secure by using 2x M10 Flange Nut [Item 3]. Ensure bracket is level then tighten to **Max Torque 17 Nm**.

NOTE: Trim excess wire



Step 12. Install stepboard to all brackets using 2x M8x11mm Flange Bolt [Item 1] per bracket. Position stepboard between the front and rear wheel arches.

Tighten all M8 bolts to 13Nm.

13. Now complete steps 3 – 12 for the L/H (Passenger) side of vehicle.

- Place “KINGSLEY SIDE STEP Warranty” on customer's front seat
- Clean the side steps if necessary using PH - Neutral soapy water ONLY