

Kingsley**STEPBOARDS®****Part No: 18J260**

**JEEP GRAND CHEROKEE V8
1999 - Current
Component List**

Board Length: 1655mm

End Caps: Front - 1 pair Upswept
Rear - 1 pair Upswept

HARDWARE KIT CONTENTS		
PART NO.	DESCRIPTION	QTY
91Z003	M8x14mm BOLT	20
91Z017	M8 Flange Nut	16
91Z012	M8x20mm Wired Bolt	8
91Z018	M8 Hex Nut	12
91Z023	M8 Flat Washer	12

PART NO.	DESCRIPTION	QTY
91Z105	M8 Lock Washer	12
91Z124	M10x50mm H/T Set Screw	2
91Z107	M10x22mm Flat Washer	2
91Z109	M10 Nyloc Nut	2
97Z900	Rust Inhibiting Compound	1

BRACKETS AND ANGLES		
PART NO.	DESCRIPTION	QTY
9AV016	L/H front bracket	1
9AV017	R/H front bracket	1
9AV018	L/H centre bracket	1
9AV019	R/H centre bracket	1
9AV020	L/H rear bracket	1
9AV021	R/H rear bracket	1

**Check kit supplied is for the vehicle being fitted and is complete as listed.
Read the instructions to be sure you understand all aspects of fitting the vehicle before
proceeding.**

TOOLS REQUIRED:

*ELECTRIC DRILL OR EQUIVALENT *3 & 8MM DRILL BITS
*SOCKET SET TO 19MM WITH RATCHET & EXTENSION *MARKING PEN *CENTRE PUNCH
*HAMMER.

FITTING INSTRUCTIONS:

- Assemble the two boards by attaching to one end the Upswept endcap appropriate for that end with M8x14mm bolts and flange nuts. See figure 1. Slide three(3) M8 hex nuts into each of the channels under the board and attach the remaining upswept endcap to the board. With both stepboards assembled lay them aside.
- Move to the centre of the vehicle and open the rear doors in turn. Slide back the oval plastic cover protecting the seat-retaining bolt closest to the outside of the vehicle, each side. Remove these bolts and replace them with the M10x50mm set screws and flat washers from kit. Tighten fully to retain seat runner and replace the oval cap.
- Now move to the underside of the vehicle and to the bolts fitted in step 2 above, attach the corresponding centre bracket for that side you are fitting to using M10 nyloc nut. Lift the assembled board onto fitted centre bracket and attach loosely with M8x14mm bolts, lock and flat washers.
Level the board and attach front and rear corresponding brackets for the side being fitted to the stepboard – attach as for centre bracket.
Move front and rear brackets into contact with hollow body members to which they will attach.
- With brackets now in position, board level and in final position - Mark and *drill holes to match those in brackets (first centre punch, then use 3mm drill bit as pilot). Rust inhibit raw metal left after drilling.

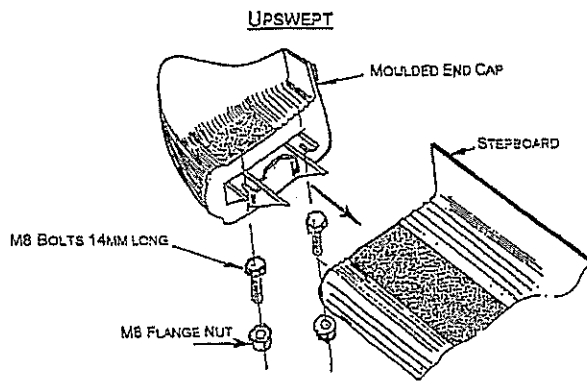
Kingsley

STEPBOARDS®

Part No: 18J260

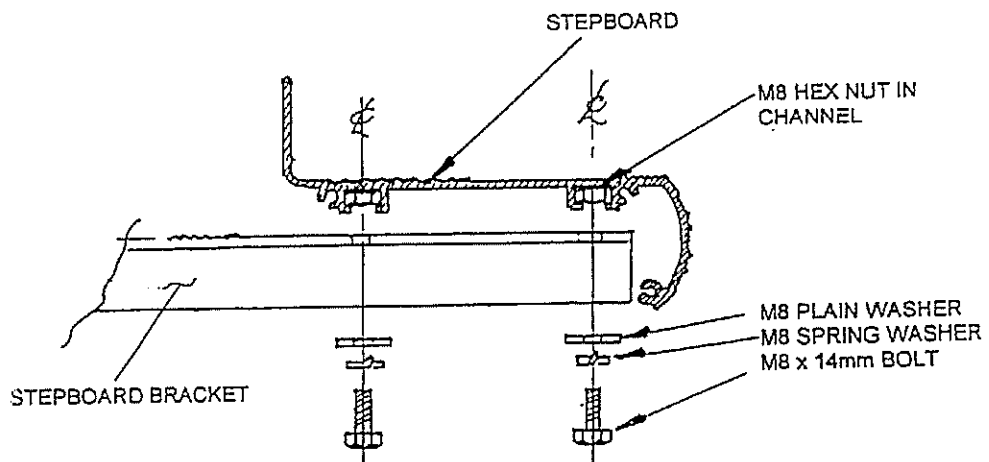
**JEEP GRAND CHEROKEE V8
1999 - Current
Component List**

5. Using wired bolts from kit, manoeuvre bolts through access holes in body features and out through drilled holes* to attach brackets with M8 flange nuts. FOLLOW THIS FITTING PROCEDURE FOR ALL FOUR BRACKETS: TWO(2) FRONT & TWO(2) REAR.
6. Ensure stepboards are parallel to sill and level. Tighten all nuts and bolts before using the stepboards. Clean stepboards if necessary using soapy water only.



FIXING OF MOULDED END CAP

1. Slide heads of two M8x14mm bolts into channels on underside of aluminium stepboard extrusion.
2. Fit end cap hard up against extrusion with bolts in slots provided.
3. Attach M8 flange nuts and tighten to lock end cap in position.



Stepboards to Bracket Attachment Details

Your Stepboards are now ready for use

In accordance with our policy of total quality commitment and customer service, we invite you to contact us on our toll free hotline should you have any questions

Telephone: (02) 9792 2566 or Toll Free 1800 654 767

Kingsley Enterprises Pty Ltd 123 Eldridge Road Bankstown NSW 2200 Australia