

Kingsley

STEPBOARDS®

FITTING INSTRUCTIONS

Part No: 18N72X

Nissan Navara D40 Extra Cab Model Commencing 07/2008

ENDCAPS: Front – 1 pair plastic Bullnose
Rear – 1 pair plastic Upswept

HARDWARE KIT CONTENTS

ITEM NO.	DESCRIPTION	QTY
1	M8 Flange Nut	20
2	M8 x 14mm Bolt	8

ITEM NO.	DESCRIPTION	QTY
3	M8 x 11mm Flange Bolt	12
4	M8 Hex Nut	12

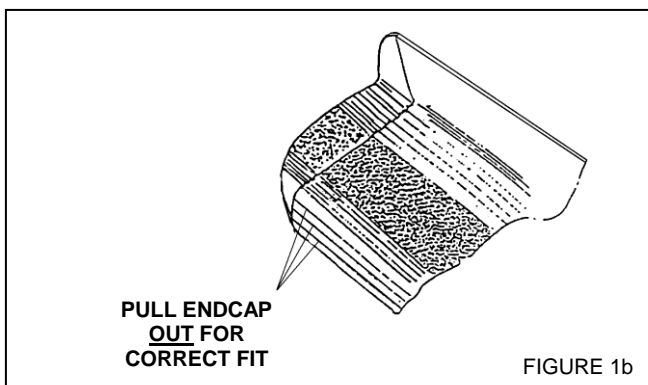
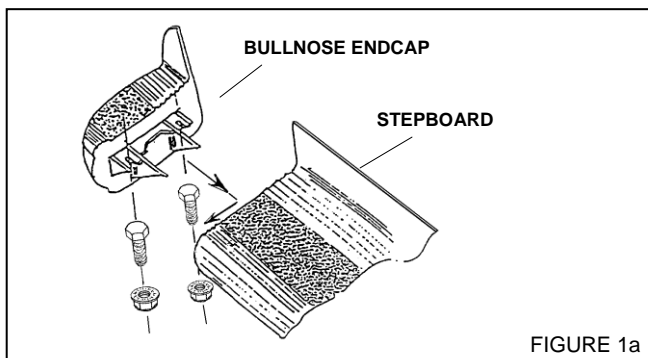
STEPBOARD BRACKETS

PART NO.	DESCRIPTION	QTY
9AP039	Common Bracket	6
-	-	-

BEFORE INSTALLATION: PLEASE READ THESE INSTRUCTIONS CAREFULLY BEFORE INSTALLATION, PAYING SPECIAL ATTENTION TO ALL 'NOTES'. FAILURE TO DO SO MAY RESULT IN DAMAGE OF PARTS AND/OR INJURY TO INSTALLER OR CUSTOMER.

TOOLS REQUIRED: • TAPE MEASURE • 13MM SOCKET & RATCHET • 13MM RING/OPEN SPANNER • TORQUE WRENCH

FITTING PROCEDURE APPROX. FITTING TIME: 45min

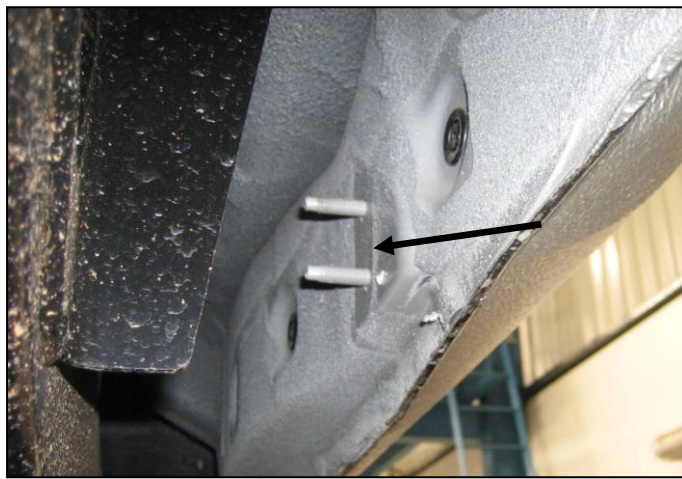


1. **Assemble the side step as follows:** Attach a moulded EndCap to one side step using two (2) M8 x 14mm bolts (gold colour) and two (2) M8 flange nuts, **See figure 1a.**

IMPORTANT: BEFORE YOU TIGHTEN THE ENDCAP, MAKE SURE THAT YOU PULL THE ENDCAP OUT SO THAT THE ENDCAP EDGE FULLY COVERS THE RAISED FEATURES ON THE SIDE STEP EDGE, **See figure 1b.**

- a. Slide into each of the underside channels of the side step three (3) M8 hex nuts, that is, six (6) per side step
- b. Complete the Stepboard Assembly by attaching to the rear of the board the upswept endcap in the same manner as for part 1. **See Figures (1a & 1b)**

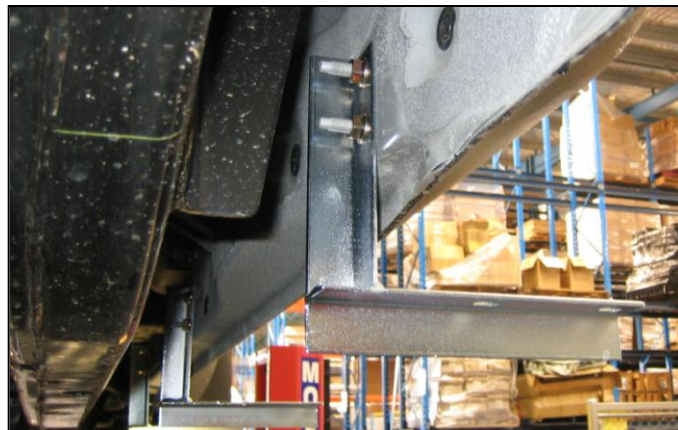
Repeat for the remaining board and place the Stepboards in a safe place to prevent damage.



Step 2. Move to the R/H (Driver) side of the vehicle. Locate front mounting position approx. 385mm from front mudflap



Step 3. Install bracket using 2 x M8 flange nuts. Tighten to max 13Nm.



Step 4. Now install centre and rear brackets in the same manner as in step 1 & 2. Mounting locations are 910mm from front mudflap and 275mm from rear of cab respectively.



Step 5. Lift the Side Step onto the brackets and position the board hard up against front plastic section. Secure the side step to the brackets using two M8 x 11mm flange bolts per bracket (item 3) picking up nuts in the channels of the Side Step. Recommended max torque: **13Nm**.

Step 6. Now complete steps 1 – 5 for the L/H (Passenger) side of vehicle

- Place “KINGSLEY SIDE STEP Warranty” on customer’s front seat
- Clean the side steps if necessary using PH - Neutral soapy water ONLY