

Vehicle Specific Instructions



NISSAN PATROL Y62 INSTALLATION KIT

ROLLER DRAWER INSTALLATION TO ADR 34/02

Roller drawer and roller floor series: Vehicle specific instruction and drawing

Installation Kit- Y62-IK

NOTE:

Do not elongate any holes

Read and understand all instructions before proceeding

*Throughout these instructions **rear** refers to **rear** of vehicle **front** refers to **front** of vehicle.*

INSTRUCTIONS ARE AVAILABLE FROM ARB STOCKISTS.

SECTION 1:- FRAME PREPERATION.....General Instructions- Supplied In Drawer Module

SECTION 2:- VEHICLE SPECIFIC INSTALLATION.....This Instruction

SECTION 3:- REASSEMBLY.....General Instructions- Supplied In Drawer Module

PARTS INCLUDED IN THIS KIT:-

| ITEM | DESCRIPTION | QTY. |
|------|-------------------------------------|------|
| 1 | RH REAR CARPETED TRIM PANEL | 1 |
| 2 | LH REAR CARPETED TRIM PANEL | 1 |
| 3 | BRACKET FRONT Y62 | 3 |
| 4 | BRACKET MIDDLE & REAR Y62 | 6 |
| 5 | HAT MOUNTS | 2 |
| 6 | M6 X 12 HEX HEAD SET SCREW | 8 |
| 7 | M10 X 25 HEX HEAD SET SCREW | 9 |
| 8 | M5 X 15 PHILLIPS SELF TAPPING SCREW | 8 |
| 9 | M6 NYLOC NUT | 8 |
| 10 | M10 NYLOC NUT | 15 |
| 11 | 1.6MM THICK FLOOR PLATE | 6 |
| 12 | M10 X 40 HEX HEAD SET SCREW | 6 |

2) VEHICLE SPECIFIC INSTALLATION:

Vehicle Specific Instructions

Ensure you have completed General Instructions Section One – Frame preparation and removed the drawer before following this vehicle specific instruction.

The General instructions are supplied with the Outback Solutions Drawer Modules and are also available from your ARB stockist.

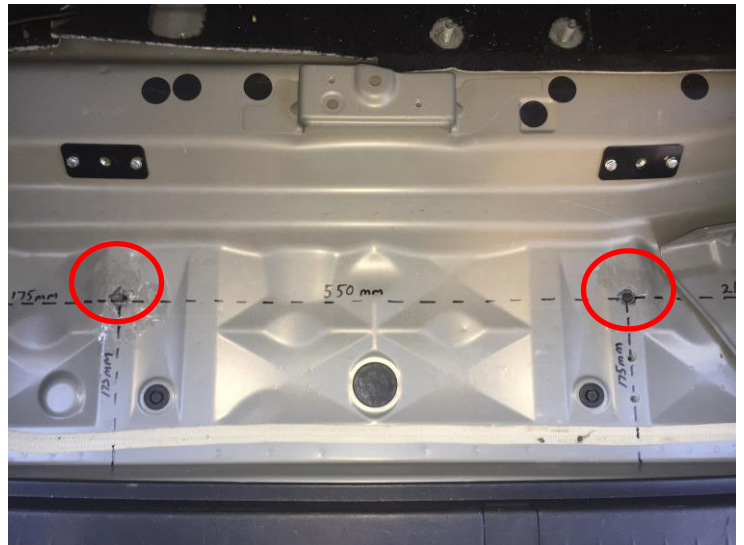
VEHICLE PREPARATION:

- 1/- Fold **centre row** seats forward to allow maximum room for frame installation
- 2/- Remove rear cover and storage tray behind 3rd row of seats. Remove jack and tool kit from RHR corner of vehicle. Remove the tie down points, rear of 3rd row seat cover panels, and small carpeted side floor cover panels. Remove the 2 M10 nuts and M8 bolts holding the cross support channel.
- 3/- Fold seats forward and remove all M10 nuts holding 3rd row seat to vehicle floor. Remove the seat belt bolt and bracket, then pull each seat belt strap through seat loops. Tilt rear seats back up, remove the plastic cover panels to expose forward seat mount bolts and remove. Remove 3rd row seats from vehicle.

Drill two 2 x 11mm holes in the rear floor well at 550mm centres and 175mm forward from rear face of floor well. The holes will be through double panel just next to the support ribs on the underside of the floor.

Remove all drill swarf and paint new holes with a rust preventative substance.

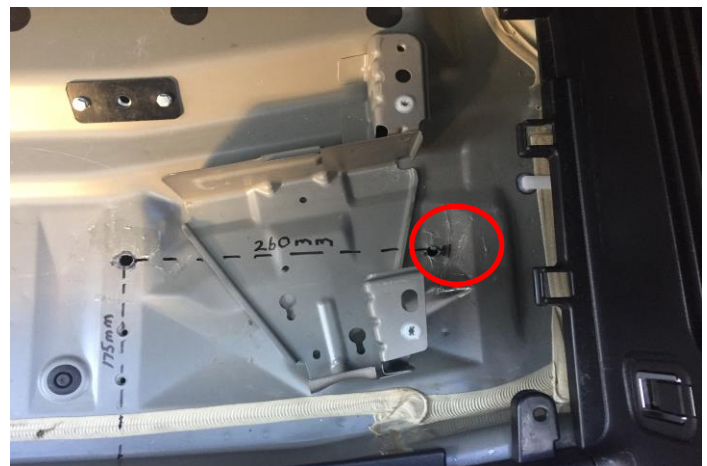
Ensure to check for clearance under floor for any existing or aftermarket accessories that may interfere or become damaged prior to drilling.



On the RH side of the vehicle. Drill an 11mm hole 260mm to the right hand side of the RH hole drilled in the previous step.

Remove all drill swarf and paint new holes with a rust preventative substance.

Ensure to check for clearance under floor for any existing or aftermarket accessories that may interfere or become damaged prior to drilling.



Vehicle Specific Instructions

On the LH side of the vehicle. Drill an 11mm hole 175mm to the left hand side of the LH hole drilled in the first step.

Remove all drill swarf and paint new holes with a rust preventative substance.

Ensure to check for clearance under floor for any existing or aftermarket accessories that may interfere or become damaged prior to drilling.



Mount 4 middle and rear support brackets to the previously drilled holes using 2 M10 x 40 bolts from the hardware kit supplied in the drawers.

Install weatherproof floor plates to the underside of the floor.



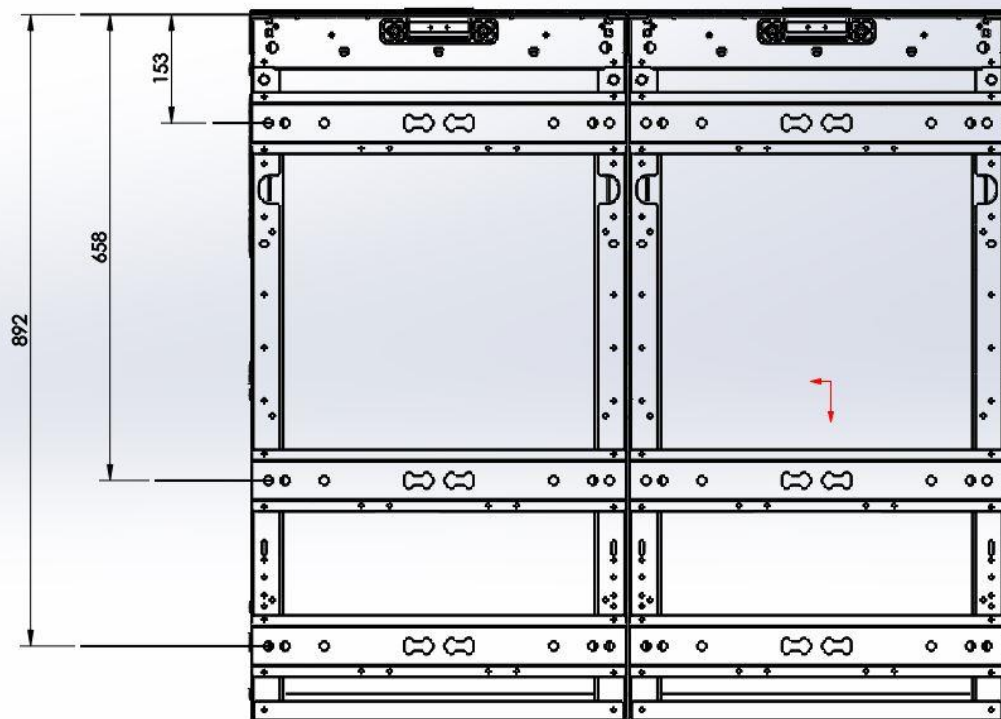
As 2 of the holes are positioned close to the floor support channel under the vehicle it is necessary to bend 2 of the floor plates to fit the contour of the floor.



Vehicle Specific Instructions

Secure 3 front mount brackets to the captive threads in the vehicle floor using the bolts removed from the seat mounts. Do not fully tighten the brackets at this stage so the brackets can be adjusted when installing the drawer frames.

Mount 2 middle and rear support brackets to the 2 studs shown. Secure using original seat mounting nuts. Once again do not fully tighten the brackets so that they can be adjusted when installing the drawer frames.



Position 3 top hat mounts in the positions shown.

Vehicle Specific Instructions

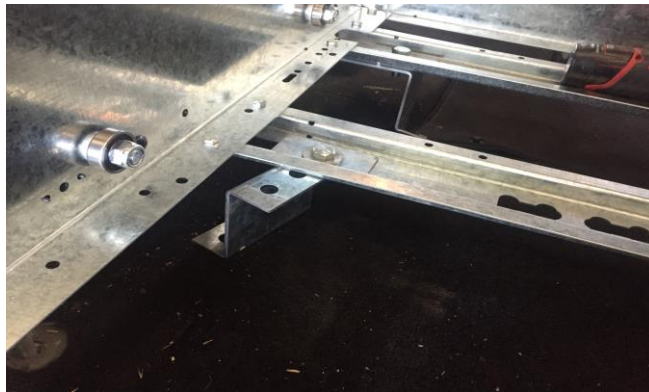
Attach the LH and RH rear carpeted trim panels to the underside of the drawer front. Secure using 8 M5 x 15 phillips self-tapping screws supplied in kit.



Carefully lift the frame into the vehicle taking care not to scratch paint work or trim. Sit the drawer frame on top of the previously installed support brackets.



Install 9 x M10 x 25 setscrews, 1.6mm thick floor plates through the hat mounts into the support brackets. Install M10 nylocs to the underside of the support brackets.



Centralize the drawers in the vehicle by aligning the join in the 2 X rear carpeted trim panels with the tailgate striker. Adjust previously installed support brackets to line up with hat mounts. Once drawers are centered tighten all mounts.

